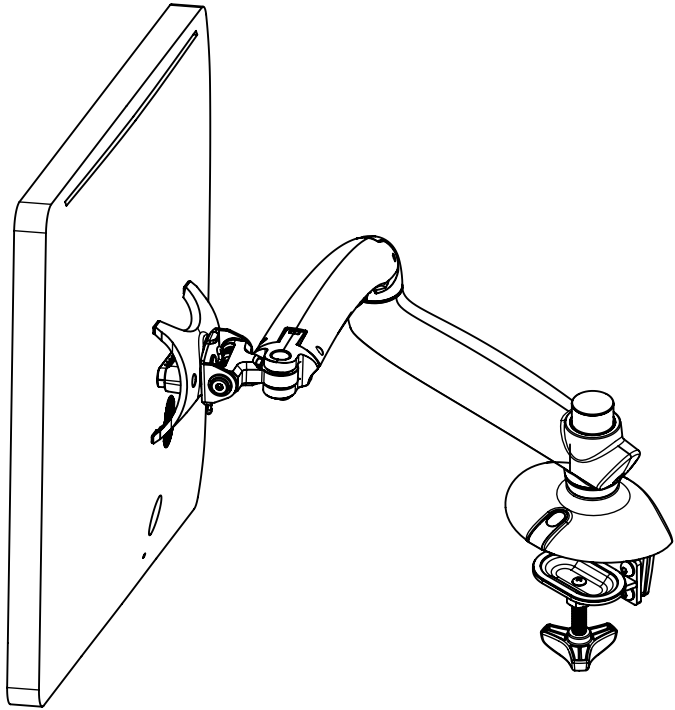
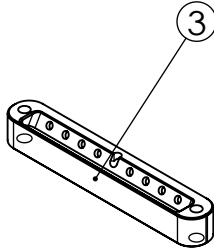
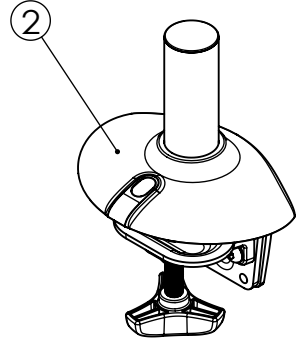
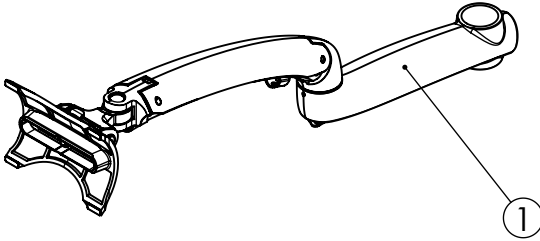


桌型支架
桌型支架
Desk Mount

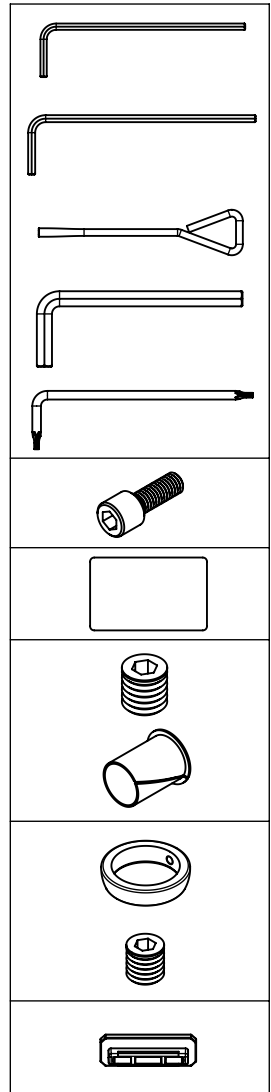


PC321
組裝說明書-V2
组裝說明書-V2
Installation Instruction-V2



零件包編號 零件包编号 Part No.	單件編號 单件编号 Sub-part No.	單包數量 单包数量 Sub-part Qty.	規格 规格 Description	零件包數量 零件包数量 Part Qty.
N/A	1	1	手臂組 手臂组 Arm Set	1
	2	1	桌型底座組 桌型底座组 Desk Clamp Base	1
	3	1	螢幕固定塊 螢幕固定块 Mounting Plate	1

零件包編號 零件包编号 Part No.	單件編號 单件编号 Sub-part No.	單包數量 单包数量 Sub-part Qty.	規格 规格 Description	零件包數量 零件包数量 Part Qty.
A-1	A-A	1	2.5號六角扳手 2.5号六角扳手 2.5mm Allen Wrench	1
	A-B	1	3號六角扳手 3号六角扳手 3mm Allen Wrench	
	A-C	1	調整扳手 调整扳手 Adjustable Wrench	
	A-D	1	5號六角扳手 5号六角扳手 5mm Allen Wrench	
	A-E	1	T10星型扳手 T10星型扳手 Torx Tool	
A-2	A-F	2	螢幕座固定螺絲 屏幕座固定螺丝 Monitor Screw	1
A-3	A-G	1	插片 插片 Access Card	1
B-1	B-A	1	M6 x 5mm 止付螺絲 M6 x 5mm 止付螺丝 M6 x 5mm Socket Set Screw	1
	B-B	1	調整管手臂軸套 调整管手臂轴套 Adjustable Arm Sleeve	
B-2	B-C	1	手臂支撐塊 手臂支撑块 Arm Support Block	1
	B-D	1	M5 x 5mm 止付螺絲 M5 x 5mm 止付螺丝 M5 x 5mm Socket Set Screw	
C-1	C-A	4	螢幕緩衝墊 屏幕缓冲垫 Plastic Pad	1

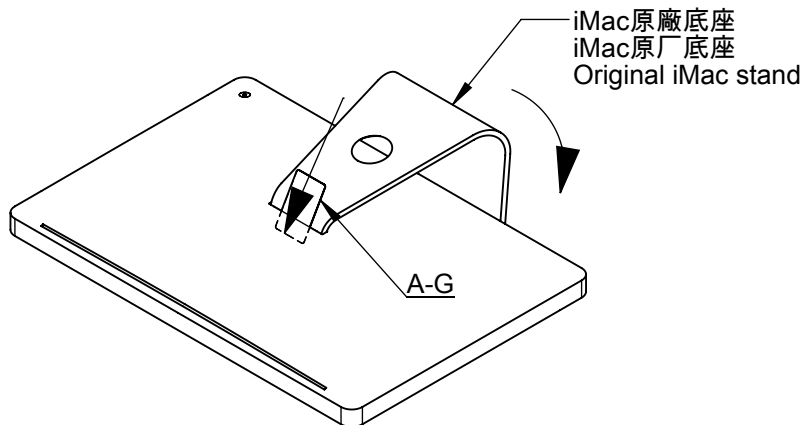


步驟一：將原廠底座折至向下後插入A-G插片。

步驟一：將原厧底座折至向下后插入A-G插片。

Step 1 : Lift the stand up to its highest point.

Insert A-G card at slight upward angle until you feel the latch.

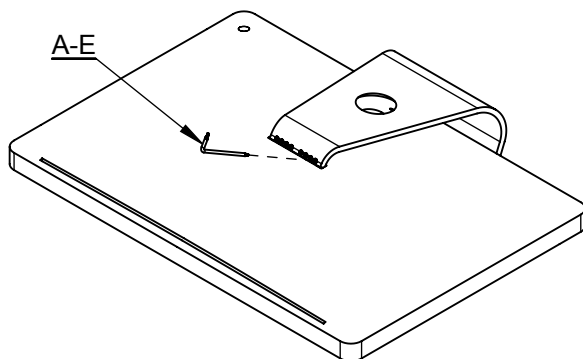


步驟二：插片一邊繼續插入一邊再將底座折向下，直至看到M3星型螺絲頭露出後，再使用A-E工具拆卸，拆卸下來的8顆螺絲請收好後面會用到。

步驟二：插片一边继续插入一边再将底座折向下，直至看到M3星型螺丝头露出后，再使用A-E工具拆卸，拆卸下来的8颗螺丝请收好后面会用到。

Step 2 : With the card in the slot, lower the stand until it is as far down

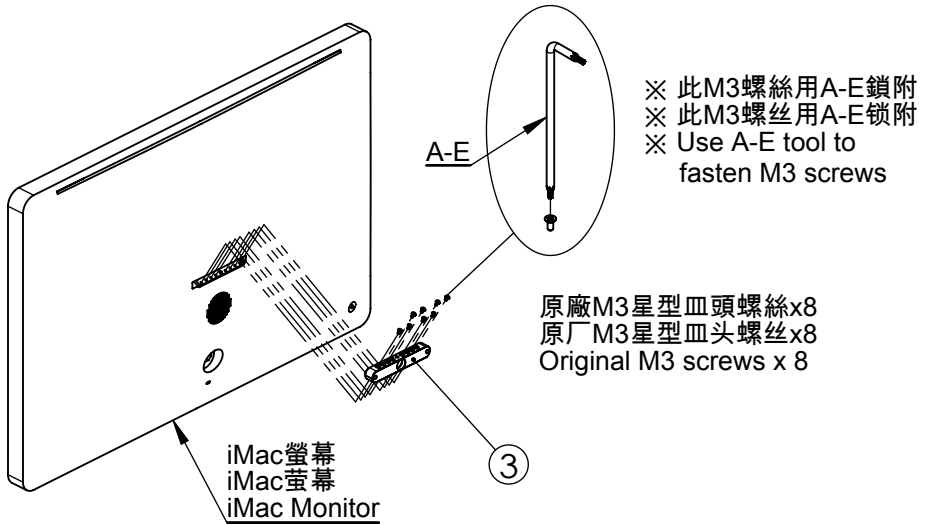
as it can be (you will see screws). Separate the stand from iMac monitor by using A-E tool, and set the original M3 screw 8 pcs aside carefully.



步驟三：將③與iMAC螢幕對齊放置後鎖入M3星型皿頭螺絲固定。

步骤三：将③与iMAC屏幕对齐放置后锁入M3星型皿头螺丝固定。

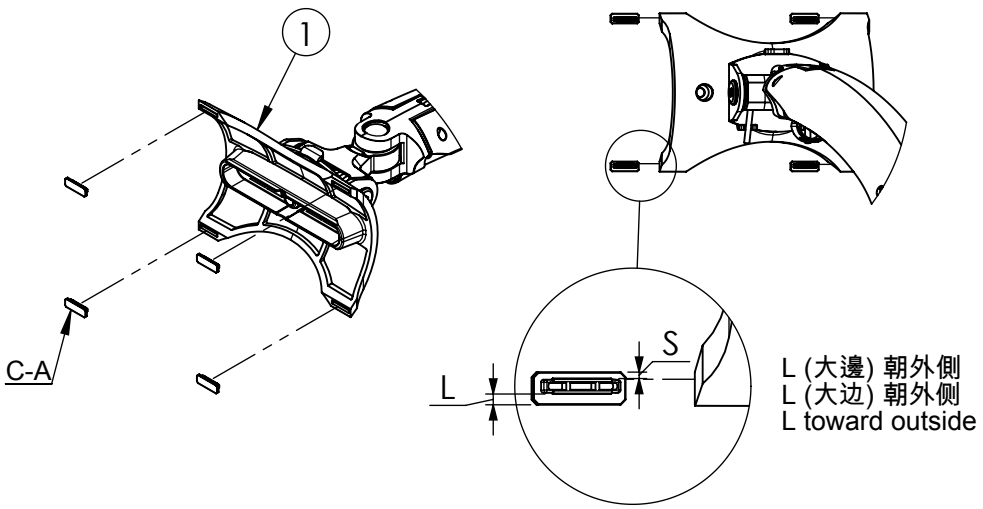
Step 3 : Fasten the mounting plate on the iMac monitor by using the M3 screws.



步驟四：將C-A依圖塞入①四角邊孔內。

步骤四：将C-A依图塞入①四角边孔内。

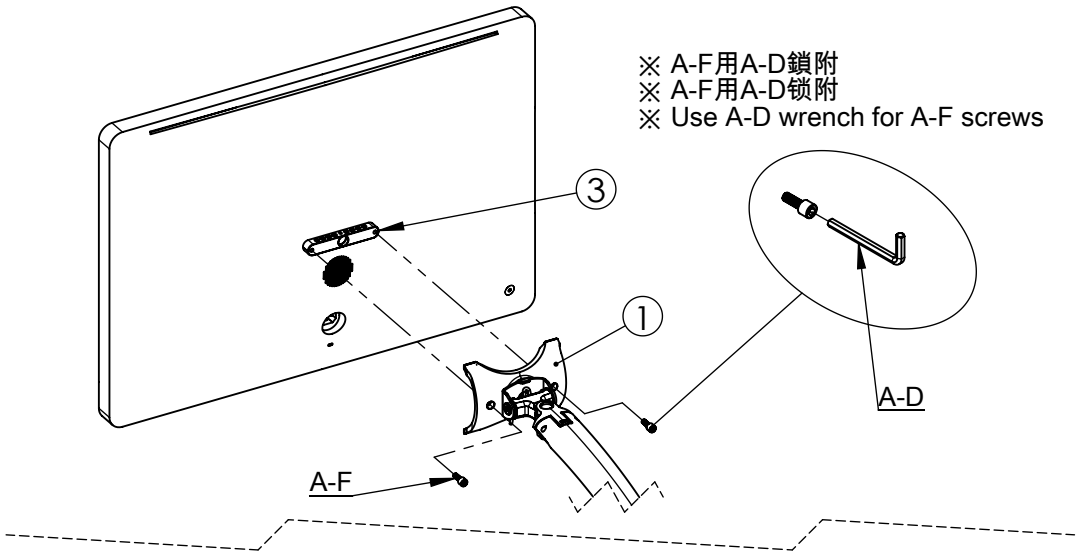
Step 4 : To install C-A into four holes at the corners of ① .



步驟五：將①依圖與③對齊放置後鎖入A-F固定。

步骤五：将①依图与③对齐放置后锁入A-F固定。

Step 5 : Fasten the arm set onto the mounting plate by using A-F screws.



步驟六：再將② 固定在辦公桌合適處。

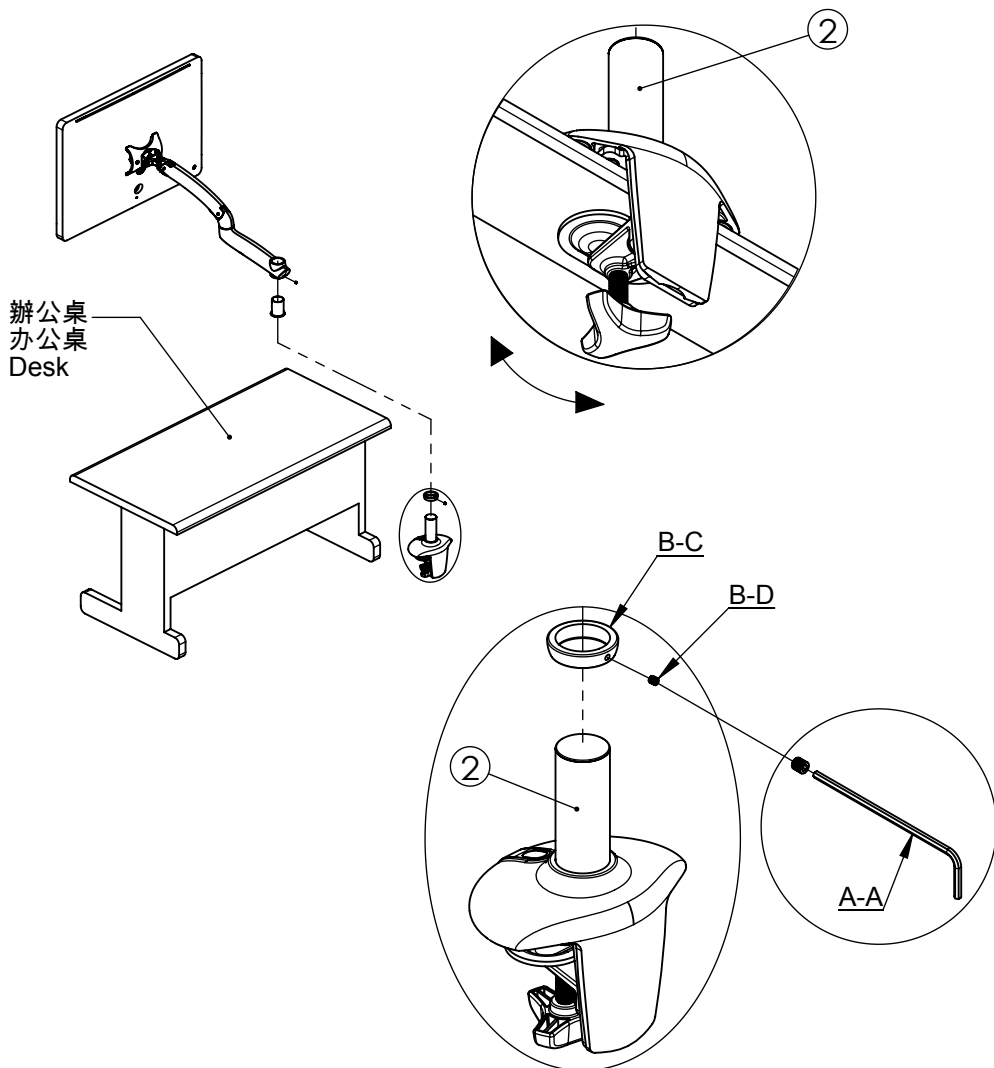
步骤六：再将② 固定在办公桌合适处。

Step 6 : Fasten the desk clamp base on the edge of the desk.

步驟七：將B-C套入② 適當位置後用B-D鎖緊固定。

步骤七：将B-C套入② 适当位置后用B-D锁紧固定。

Step 7 : Insert B-C block into the desk clamp base, and fasten the block in the suitable position by B-D screw.



步驟八：再將B-B依圖套入至①孔內到底。(注意圖示缺口方向)

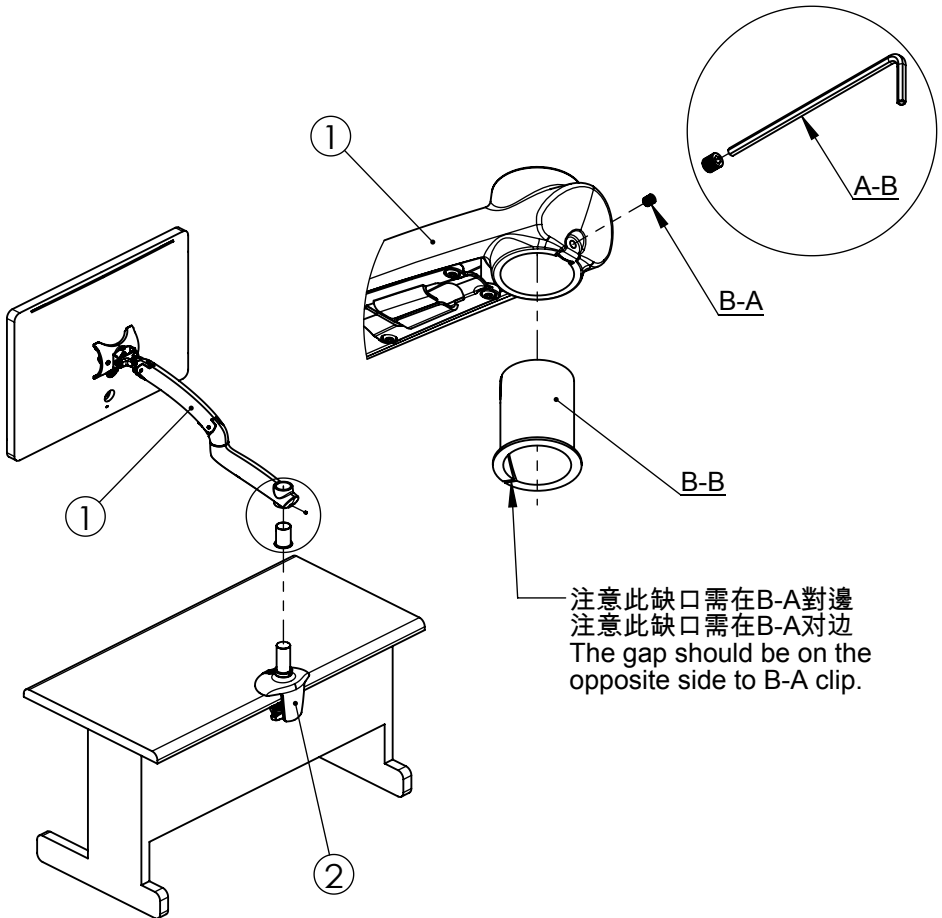
步骤八：再将B-B依图套入至①孔内到底。(注意图示缺口方向)

Step 8 : Install B-B sleeve into the hole of the arm connection set.
(Note the sleeve gap location)

步驟九：最後將①套入至②管內後用B-A鎖緊。

步骤九：最后将①套入至②管内后用B-A锁紧。

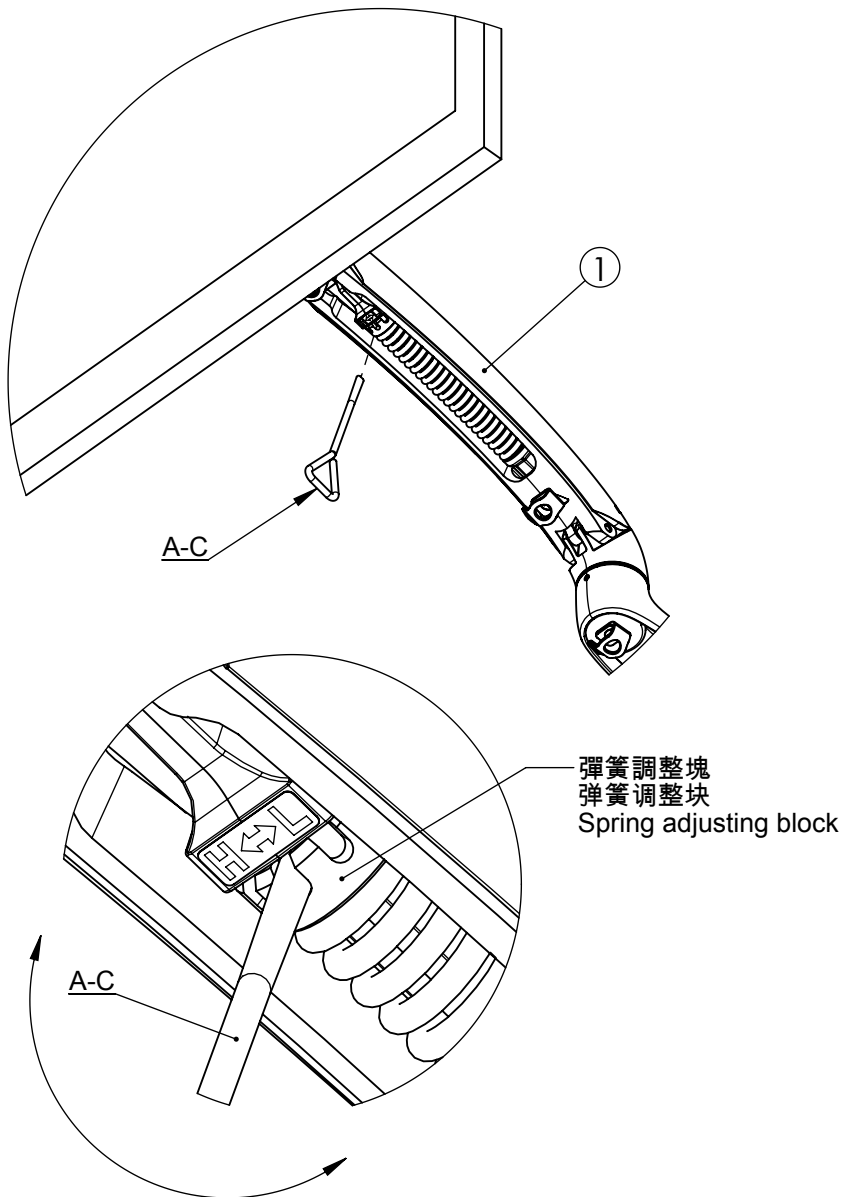
Step 9 : Inset the arm connection set into the desk clamp base,
and tighten the arm set by B-A screw.



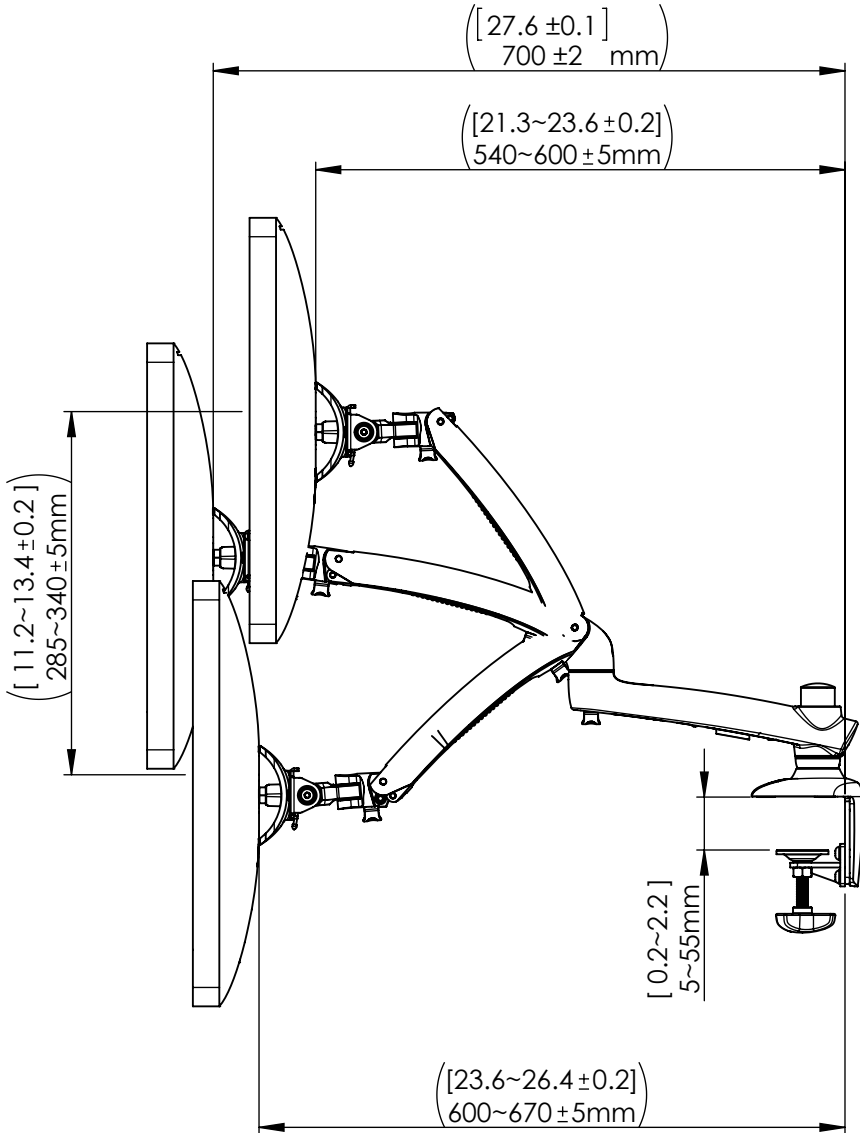
註：產品組裝完畢後請視螢幕重量使用A-C調整"彈簧調整塊"，重螢幕往"H"方向調整，輕螢幕往"L"方向調整。

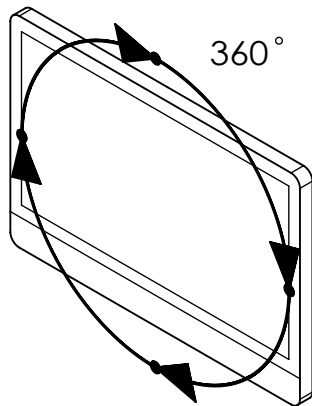
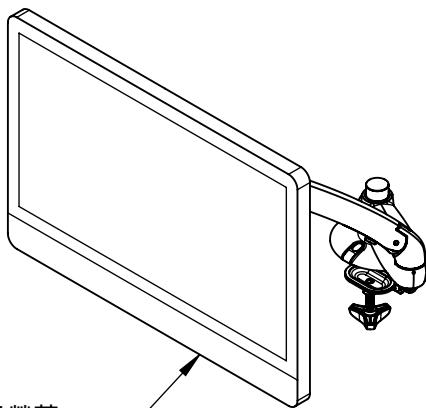
注：产品组装完毕后请视屏幕重量使用A-C调整"弹簧调整块"，重屏幕往"H"方向调整，轻屏幕往"L"方向调整。

Remark : After the installation, please use A-C wrench to adjust the spring adjusting block based on the weight of the monitor.
"H" is provided for the heavy monitor and "L" is provided for the light monitor.



- ※ 手臂拉伸距離會因彈簧依螢幕調整而有些差異
- ※ 手臂拉伸距離會因彈簧依螢幕調整而有些差異
- ※ The distance of the arm stretch is depending on the spring tension adjusted for different weights of monitors.





適用螢幕：
 适用屏幕：
 Monitor Compatibility:
 Thunderbolt Display.
 Apple LED Cinema Display.
 24-inch iMac (aluminum).
 27-inch iMac.
 8-14kg

※ 以下角度以一般平面螢幕為基準，實際角度還是要依安裝的螢幕而定。
 ※ 以下角度以一般平面屏幕为基准，实际角度还是要依安装的屏幕而定。
 ※ Below angles are estimated for general monitors.
 Actual angles would depend on the monitor in use.

