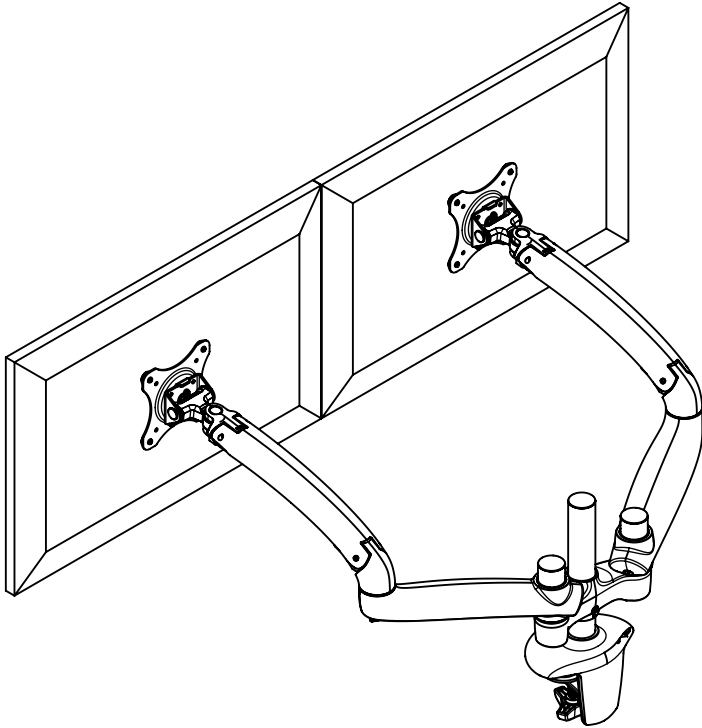
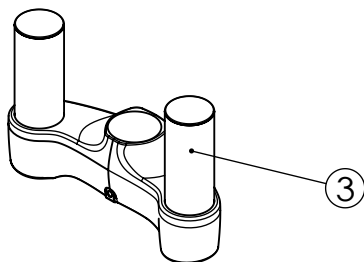
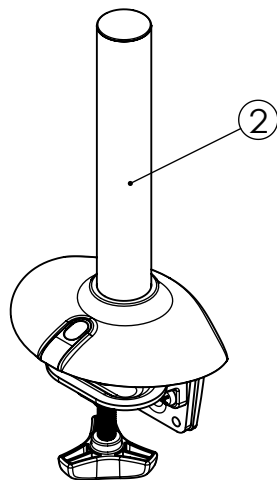
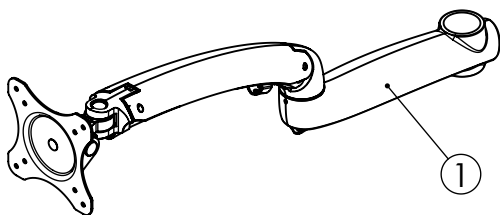


桌型支架
桌型支架
Desk Mount

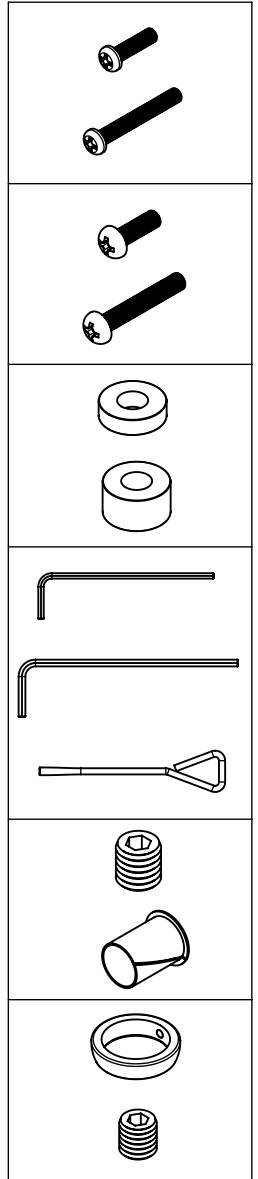


PC312
組裝說明書-V2
組裝說明書-V2
Installation Instruction-V2



零件包編號 零件包编号 Part No.	單件編號 单件编号 Sub-part No.	單包數量 单包数量 Sub-part Qty.	規格 规格 Description	零件包數量 零件包数量 Part Qty.
N/A	1	1	手臂組 手臂组 Arm Set	2
	2	1	桌型底座組 桌型底座组 Desk Clamp Base	1
	3	1	雙手臂調整底座組 双手臂调整底座组 Arm Connection Set	1

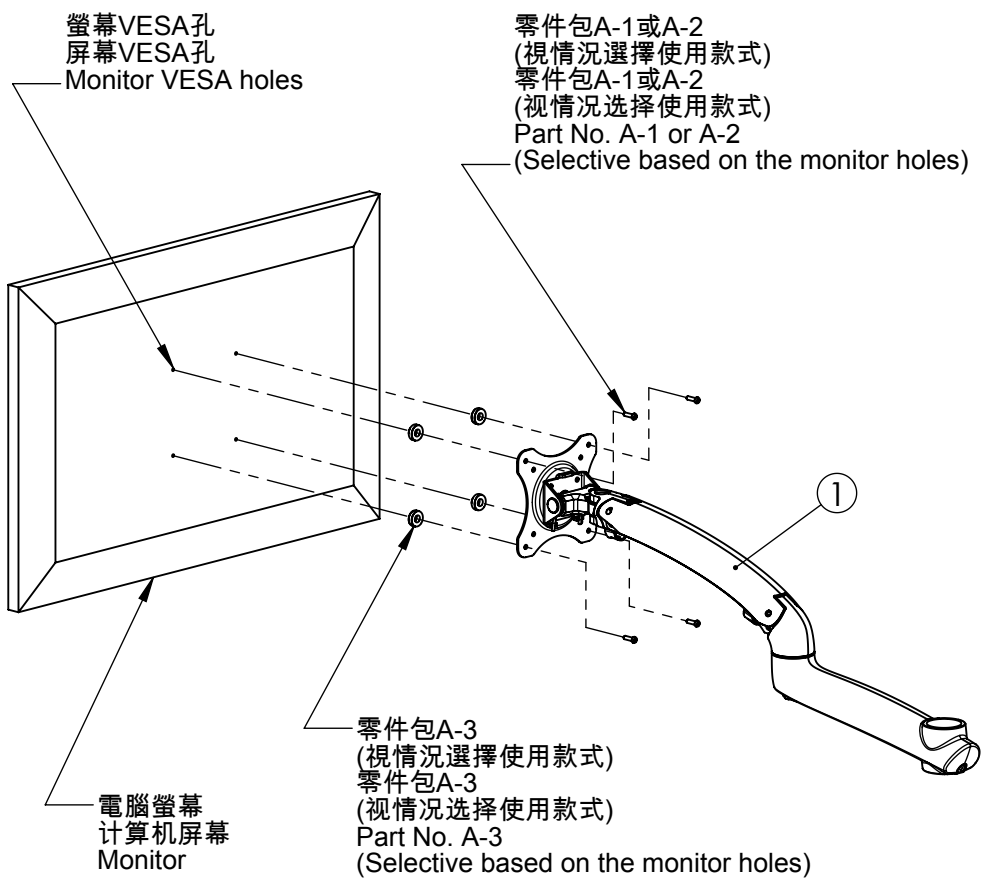
零件包編號 零件包编号 Part No.	單件編號 单件编号 Sub-part No.	單包數量 单包数量 Sub-part Qty.	規格 规格 Description	零件包數量 零件包数量 Part Qty.
A-1	A-A	4	M4 x 15mm 螺絲 M4 x 15mm 螺丝 M4 x 15mm Philips Screw	2
	A-B	4	M4 x 30mm 螺絲 M4 x 30mm 螺丝 M4 x 30mm Philips Screw	
A-2	A-C	4	M5 x 15mm 螺絲 M5 x 15mm 螺丝 M5 x 15mm Philips Screw	2
	A-D	4	M5 x 30mm 螺絲 M5 x 30mm 螺丝 M5 x 30mm Philips Screw	
A-3	A-E	4	5mm 塑膠墊片 5mm 塑料垫片 5mm Spacer	2
	A-F	4	10mm 塑膠墊片 10mm 塑料垫片 10mm Spacer	
B-1	B-A	1	2.5號六角扳手 2.5号六角扳手 2.5mm Allen Wrench	1
	B-B	1	3號六角扳手 3号六角扳手 3mm Allen Wrench	
	B-C	1	調整扳手 调整扳手 Adjustable Wrench	
C-1	C-A	3	M6 x 5mm止付螺絲 M6 x 5mm止付螺丝 M6 x 5mm Socket Set Screw	1
	C-B	3	調整管手臂軸套 调整管手臂轴套 Adjustable Arm Sleeve	
C-2	C-C	1	手臂支撐塊 手臂支撑块 Arm Support Block	1
	C-D	1	M5 x 5mm止付螺絲 M5 x 5mm止付螺丝 M5 x 5mm Socket Set Screw	



步驟一：將A-1或A-2螺絲照圖依序穿過①、A-3塑膠墊片再鎖入電腦螢幕鎖緊固定。
(因電腦螢幕的VESA孔深度大不相同，所以塑膠墊片&螺絲請視情況選擇使用款式)

步驟一：將A-1或A-2螺絲照圖依序穿過①、A-3塑料墊片再鎖入计算机屏幕鎖緊固定。
(因计算机屏幕的VESA孔深度大不相同，所以塑料墊片&螺絲請視情況選擇使用款式)

Step 1 : Use A-1 or A-2 screws for the arm set, and use A-3 5mm or 10mm spacers between the arm set and the monitor. (Due to the depth of the VESA hole may be various, please select the suitable spacers and screws.)



步驟二：再將② 固定在辦公桌合適處。

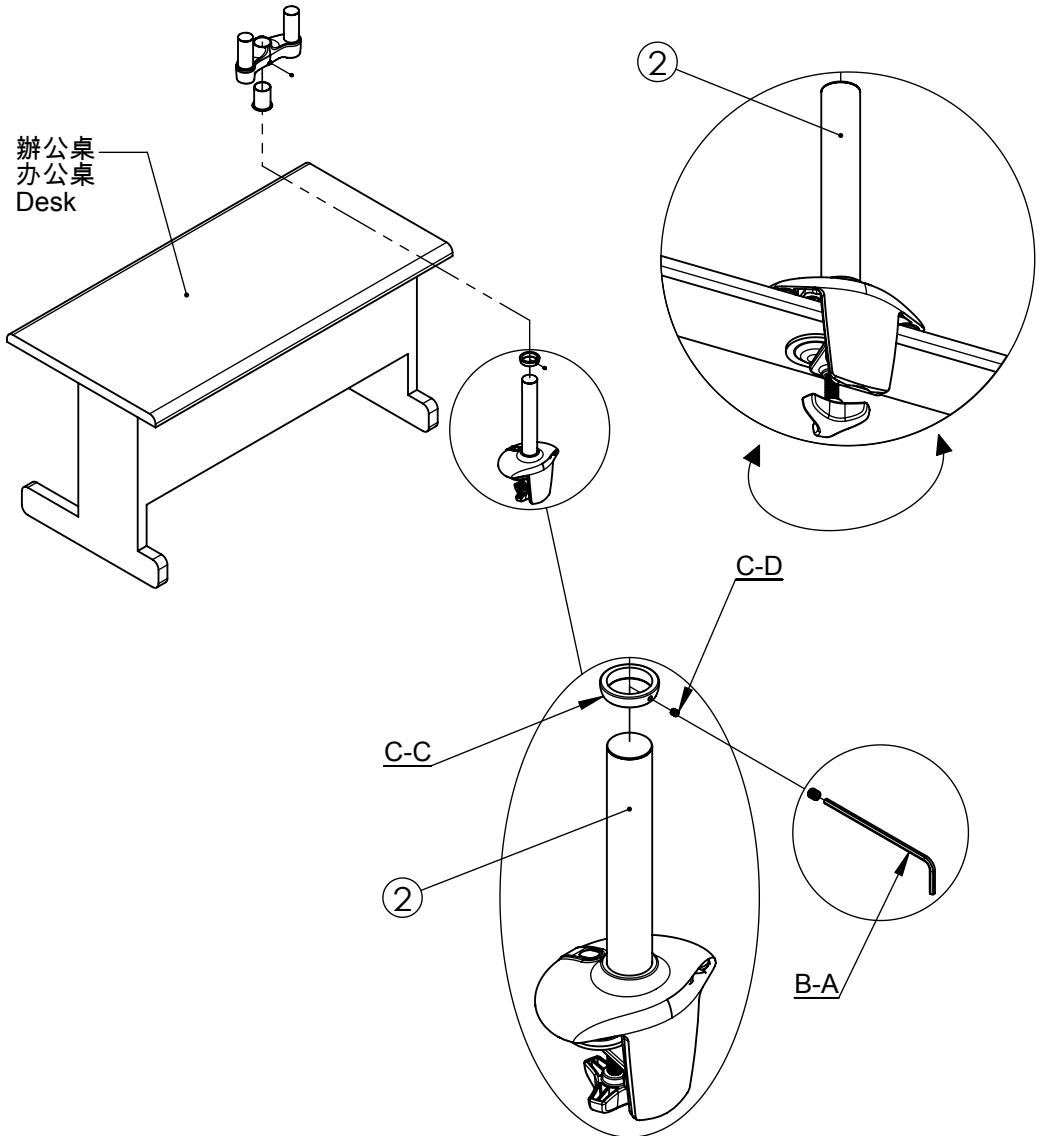
步骤二：再将② 固定在办公桌合适处。

Step 2 : Fasten the desk clamp base on the edge of the desk.

步驟三：將C-C套入② 適當位置後用C-D鎖緊固定。

步骤三：将C-C套入② 适当位置后用C-D锁紧固定。

Step 3 : Insert C-C block into the desk clamp base, and fasten the block in the suitable position by C-D screw.



步驟四：再將C-B依圖套入至③孔內到底。(注意圖示缺口方向)

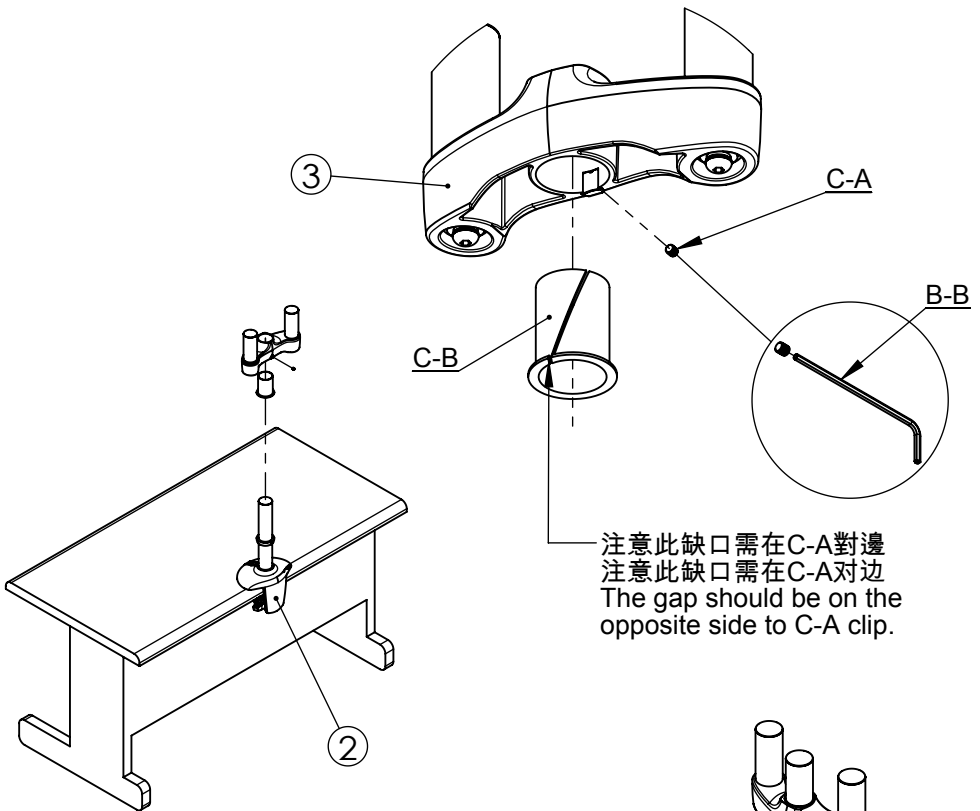
步骤四：再将C-B依图套入至③孔内到底。(注意图示缺口方向)

Step 4 : Install C-B sleeve into the hole of the arm connection set.
(Note the sleeve gap location)

步驟五：最後將③套入至②管內後用C-A鎖緊。

步骤五：最后将③套入至②管内后用C-A锁紧。

Step 5 : Inset the arm connection set into the desk clamp base,
and tighten the arm set by C-A screw.



注意此缺口需在C-A對邊
注意此缺口需在C-A对边
The gap should be on the
opposite side to C-A clip.

組裝③ 請注意：弧面朝前側。
组装③ 请注意：弧面朝前側。

When assembling the arm connection set,
make its curve toward the front.

步驟六：再將C-B依圖套入至①孔內到底。(注意圖示缺口方向)

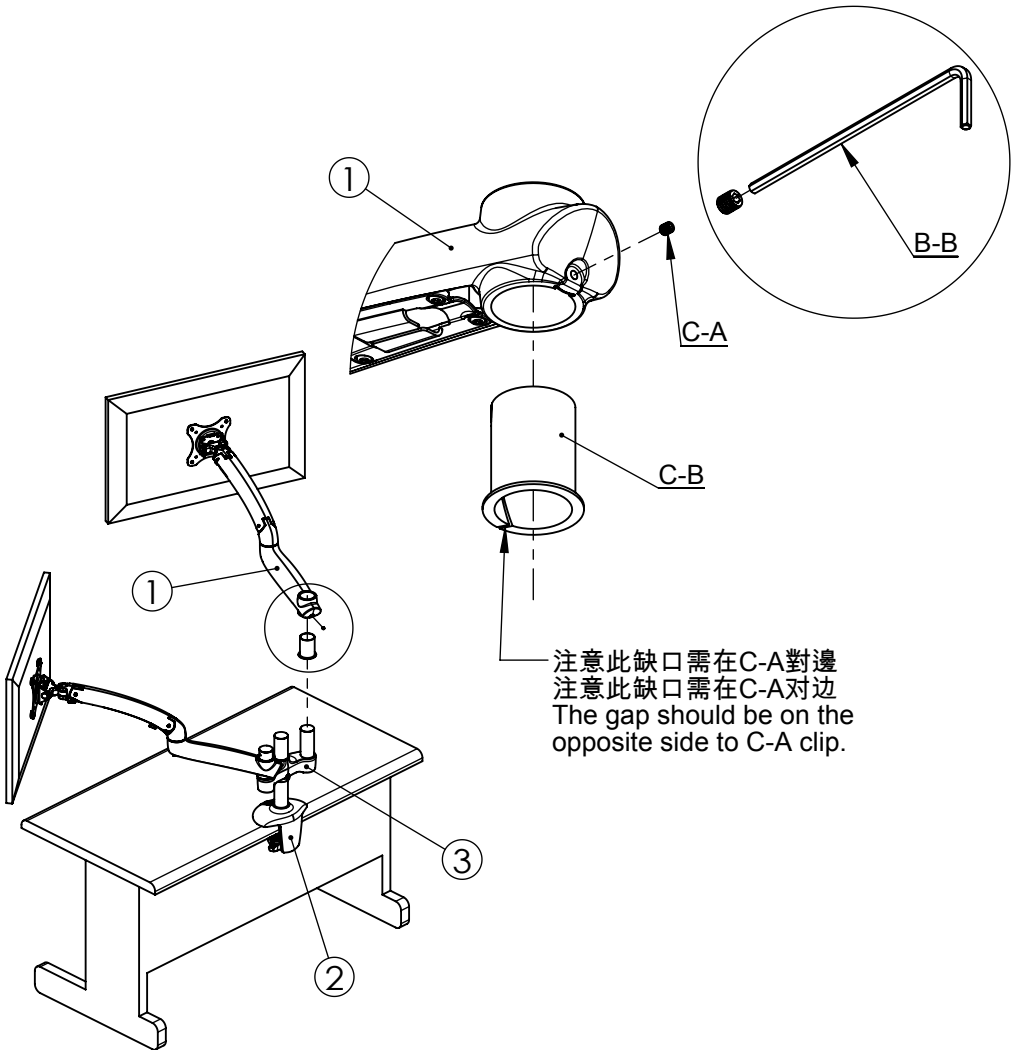
步骤六：再将C-B依图套入至①孔内到底。(注意图示缺口方向)

Step 6 : Install C-B sleeve into the hole of the arm set. (Note the sleeve gap location)

步驟七：最後將①整組套入至③管內後用C-A鎖緊即完成。

步骤七：最后将①整组套入至③管内后用C-A锁紧即完成。

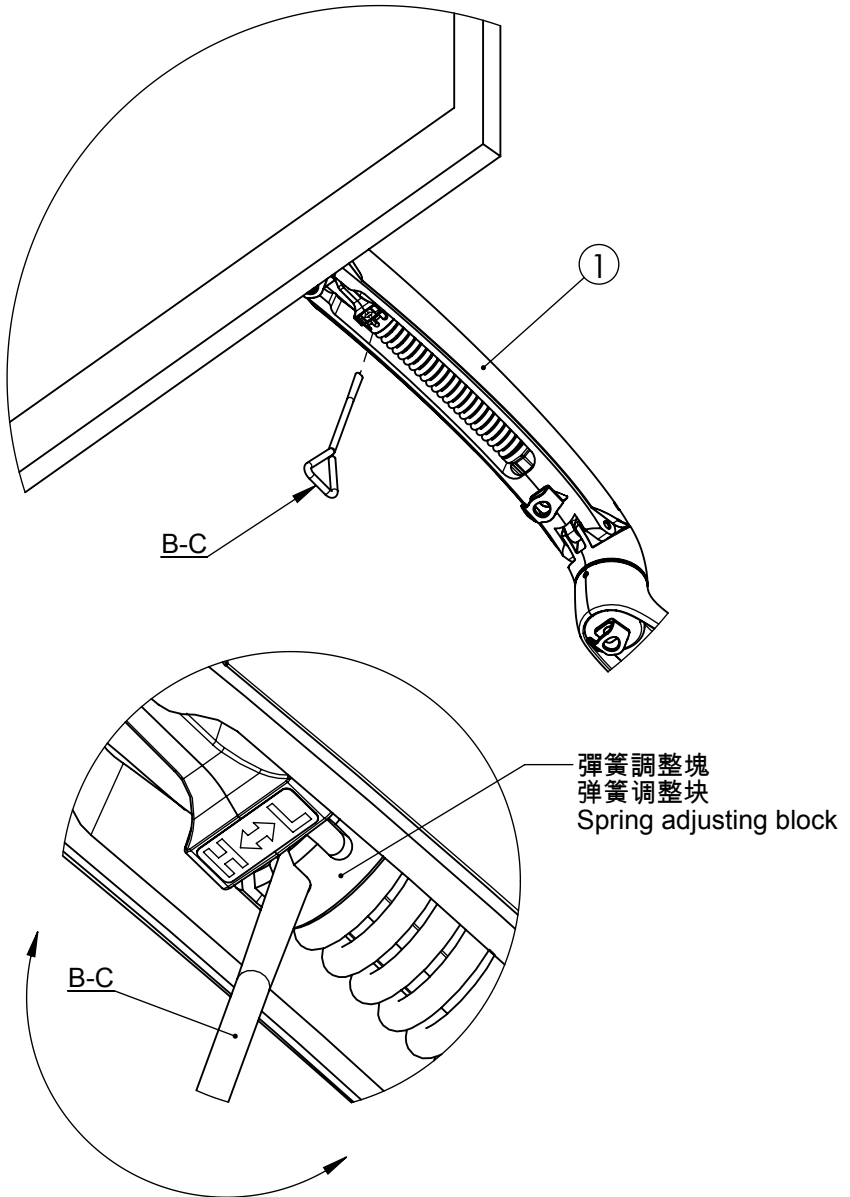
Step 7 : Inset the arm set into the arm connection set, and tighten the arm set by C-A.



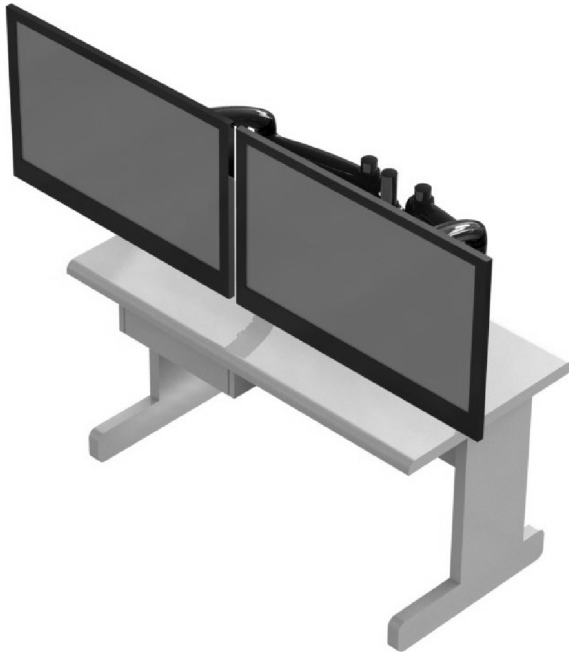
註：產品組裝完畢後請視螢幕重量使用B-C調整"彈簧調整塊"，重螢幕往"H"方向調整，輕螢幕往"L"方向調整。

注：产品组装完毕后请视屏幕重量使用B-C调整"弹簧调整块"，重屏幕往"H"方向调整，轻屏幕往"L"方向调整。

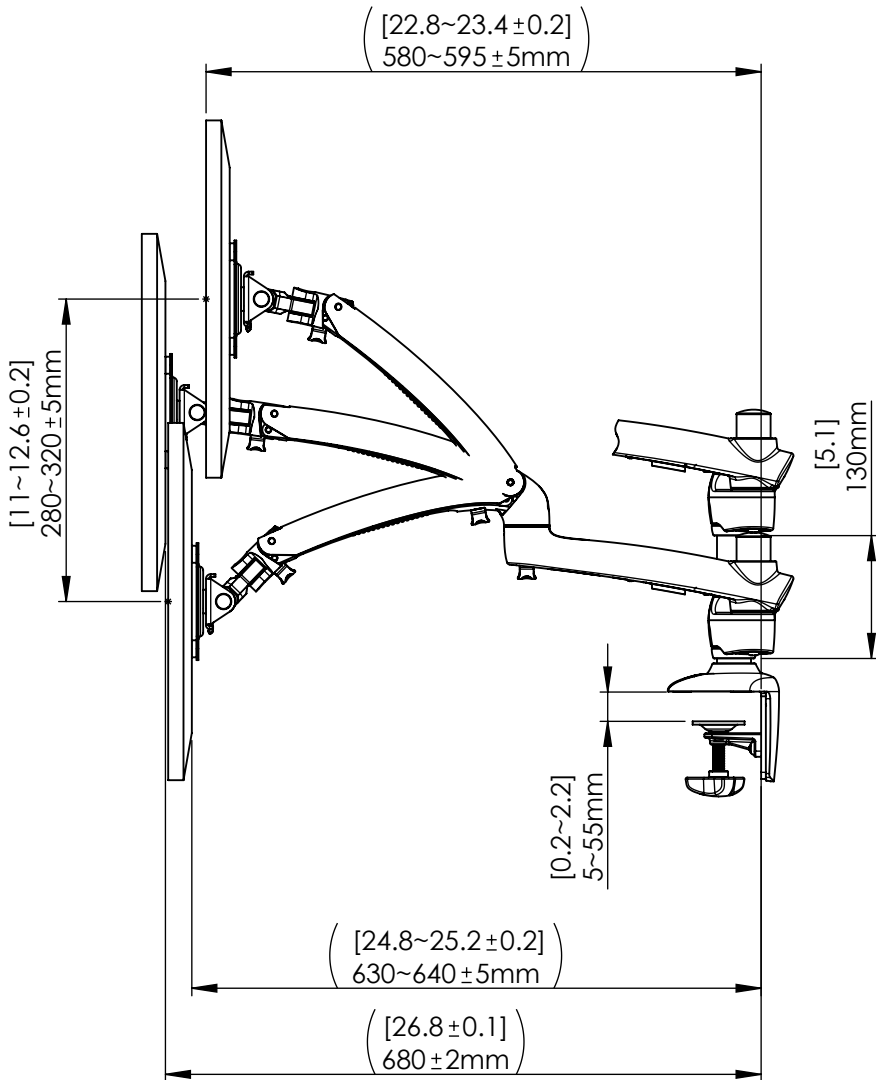
Remark : After the installation, please use B-C wrench to adjust the spring adjusting block based on the weight of the monitor.
"H" is provided for the heavy monitor and "L" is provided for the light monitor.

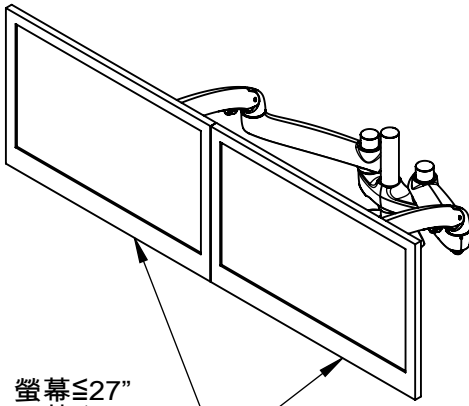


組立完成圖
組立完成图
Assembly completed



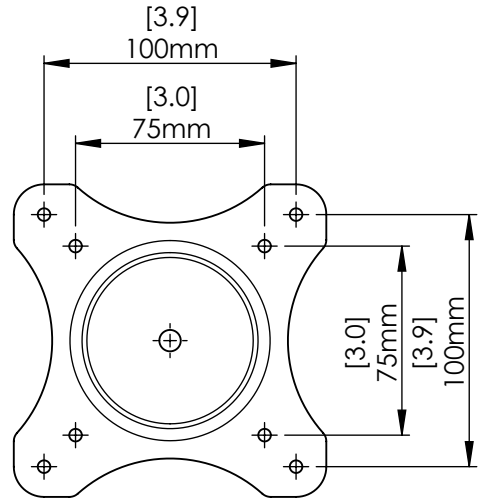
- ※ 手臂拉伸距離會因彈簧依螢幕調整而有些差異
- ※ 手臂拉伸距離會因彈簧依屏幕調整而有些差異
- ※ The distance of the arm stretch is depending on the spring tension adjusted for different weights of monitors.





螢幕 ≤ 27"
 屏幕 ≤ 27"
 Monitor ≤ 27"

3.8~8.1kg



VESA

- ※ 以下角度以一般平面螢幕為基準，實際角度還是要依安裝的螢幕而定。
- ※ 以下角度以一般平面屏幕为基准，实际角度还是要依安装的屏幕而定。
- ※ Below angles are estimated for general monitors.
- Actual angles would depend on the monitor in use.

