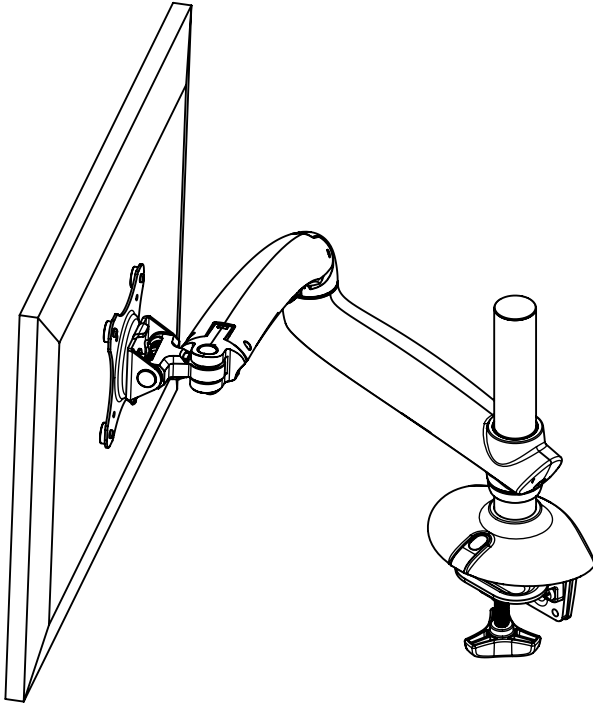
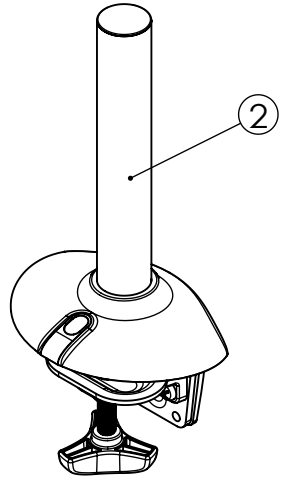
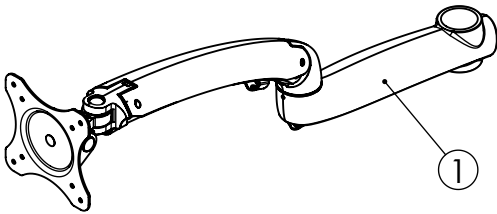


桌型支架  
桌型支架  
Desk Mount

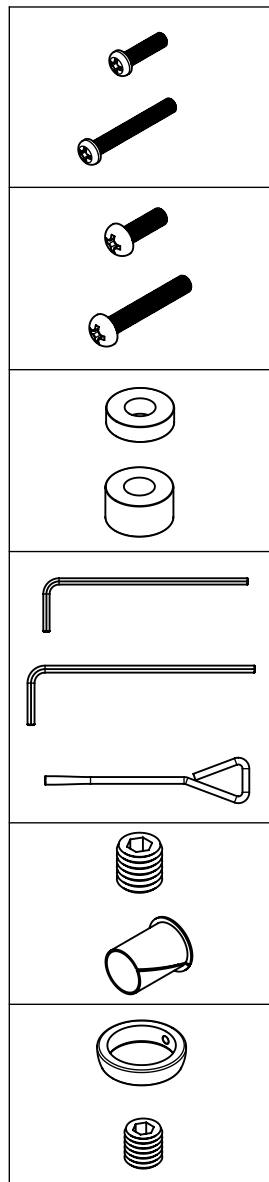


PC311  
組裝說明書-V2  
组裝說明書-V2  
Installation Instruction-V2



| 零件包編號<br>零件包编号<br>Part No. | 單件編號<br>单件编号<br>Sub-part No. | 單包數量<br>单包数量<br>Sub-part Qty. | 規格<br>规格<br>Description           | 零件包數量<br>零件包数量<br>Part Qty. |
|----------------------------|------------------------------|-------------------------------|-----------------------------------|-----------------------------|
| N/A                        | 1                            | 1                             | 手臂組<br>手臂组<br>Arm Set             | 1                           |
|                            | 2                            | 1                             | 桌型底座組<br>桌型底座组<br>Desk Clamp Base | 1                           |

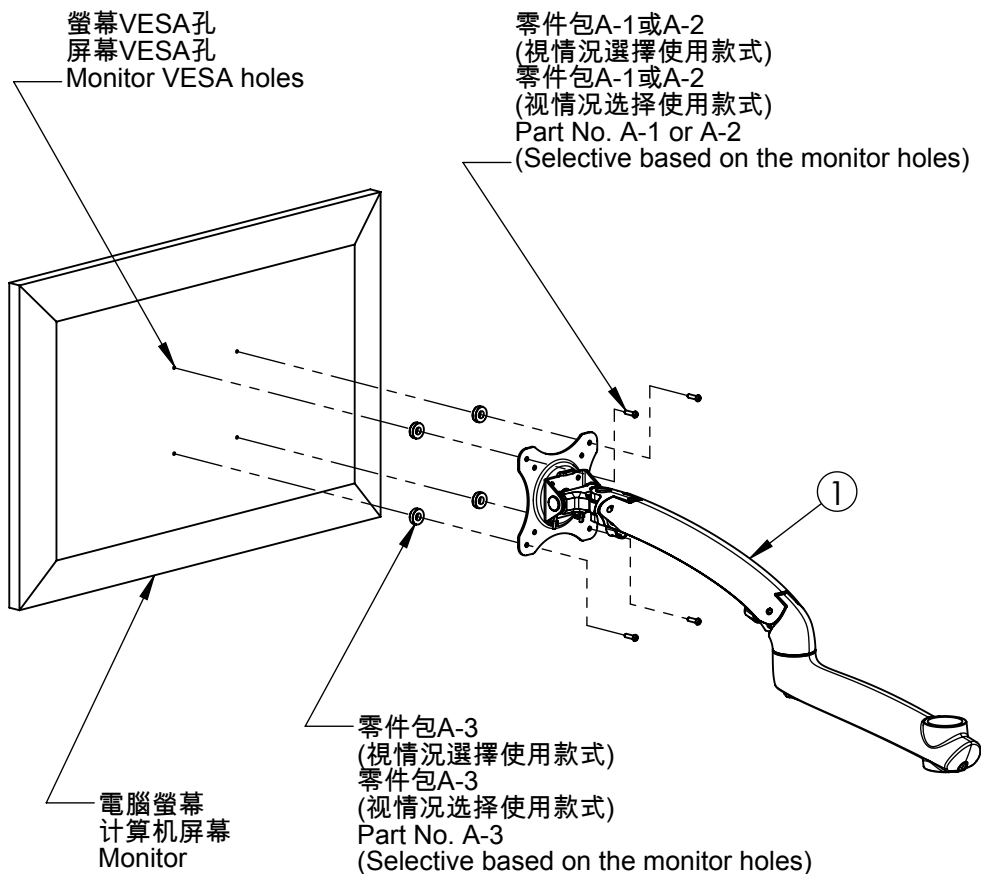
| 零件包編號<br>零件包编号<br>Part No. | 單件編號<br>单件编号<br>Sub-part No. | 單包數量<br>单包数量<br>Sub-part Qty. | 規格<br>规格<br>Description                                   | 零件包數量<br>零件包数量<br>Part Qty. |
|----------------------------|------------------------------|-------------------------------|---|-----------------------------|
| A-1                        | A-A                          | 4                             | M4 x 15mm 螺絲<br>M4 x 15mm 螺丝<br>M4 x 15mm Philips Screw   | 1                           |
|                            | A-B                          | 4                             | M4 x 30mm 螺絲<br>M4 x 30mm 螺丝<br>M4 x 30mm Philips Screw   |                             |
| A-2                        | A-C                          | 4                             | M5 x 15mm 螺絲<br>M5 x 15mm 螺丝<br>M5 x 15mm Philips Screw   | 1                           |
|                            | A-D                          | 4                             | M5 x 30mm 螺絲<br>M5 x 30mm 螺丝<br>M5 x 30mm Philips Screw   |                             |
| A-3                        | A-E                          | 4                             | 5mm 塑膠墊片<br>5mm 塑料垫片<br>5mm Spacer                        | 1                           |
|                            | A-F                          | 4                             | 10mm 塑膠墊片<br>10mm 塑料垫片<br>10mm Spacer                     |                             |
| B-1                        | B-A                          | 1                             | 2.5號六角扳手<br>2.5号六角扳手<br>2.5mm Allen Wrench                | 1                           |
|                            | B-B                          | 1                             | 3號六角扳手<br>3号六角扳手<br>3mm Allen Wrench                      |                             |
|                            | B-C                          | 1                             | 調整扳手<br>调整扳手<br>Adjustable Wrench                         |                             |
| C-1                        | C-A                          | 1                             | M6 x 5mm止付螺絲<br>M6 x 5mm止付螺丝<br>M6 x 5mm Socket Set Screw | 1                           |
|                            | C-B                          | 1                             | 調整管手臂軸套<br>调整管手臂轴套<br>Adjustable Arm Sleeve               |                             |
| C-2                        | C-C                          | 1                             | 手臂支撐塊<br>手臂支撑块<br>Arm Support Block                       | 1                           |
|                            | C-D                          | 1                             | M5 x 5mm止付螺絲<br>M5 x 5mm止付螺丝<br>M5 x 5mm Socket Set Screw |                             |



步驟一：將A-1或A-2螺絲照圖依序穿過①、A-3塑膠墊片再鎖入電腦螢幕鎖緊固定。  
(因電腦螢幕的VESA孔深度大不相同，所以塑膠墊片&螺絲請視情況選擇使用款式)

步驟一：將A-1或A-2螺絲照圖依序穿過①、A-3塑料墊片再鎖入計算機屏幕鎖緊固定。  
(因計算機屏幕的VESA孔深度大不相同，所以塑料墊片&螺絲請視情況選擇使用款式)

Step 1 : Use A-1 or A-2 screws for the arm set, and use A-3 5mm or 10mm spacers between the arm set and the monitor. (Due to the depth of the VESA hole may be various, please select the suitable spacers and screws.)



步驟二：再將②固定在辦公桌合適處。

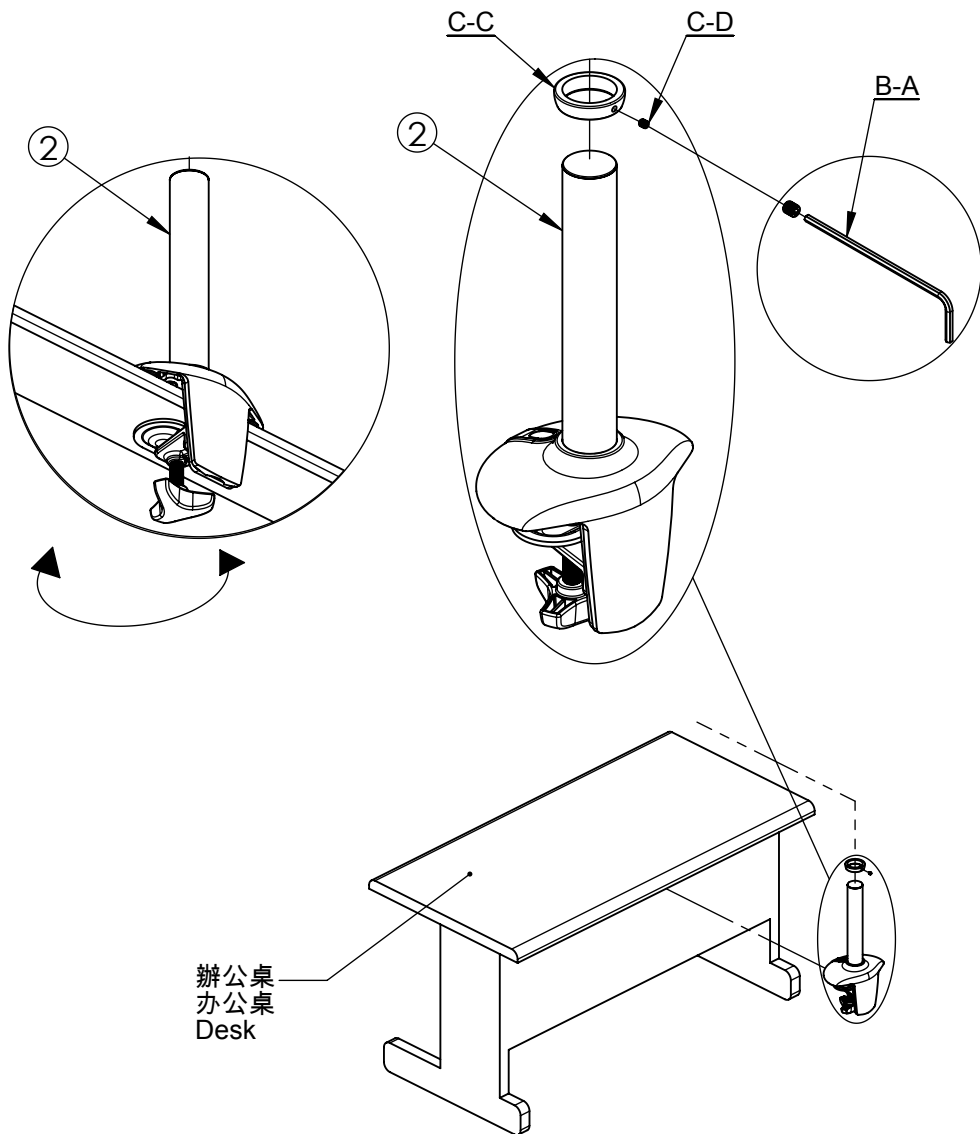
步骤二：再将②固定在办公桌合适处。

Step 2 : Fasten the desk clamp base on the edge of the desk.

步驟三：將C-C套入②適當位置後用C-D鎖緊固定。

步骤三：将C-C套入②适当位置后用C-D锁紧固定。

Step 3 : Insert C-C block into the desk clamp base, and fasten the block in the suitable position by C-D screw.



步驟四：再將C-B依圖套入至①孔內到底。(注意圖示缺口方向)

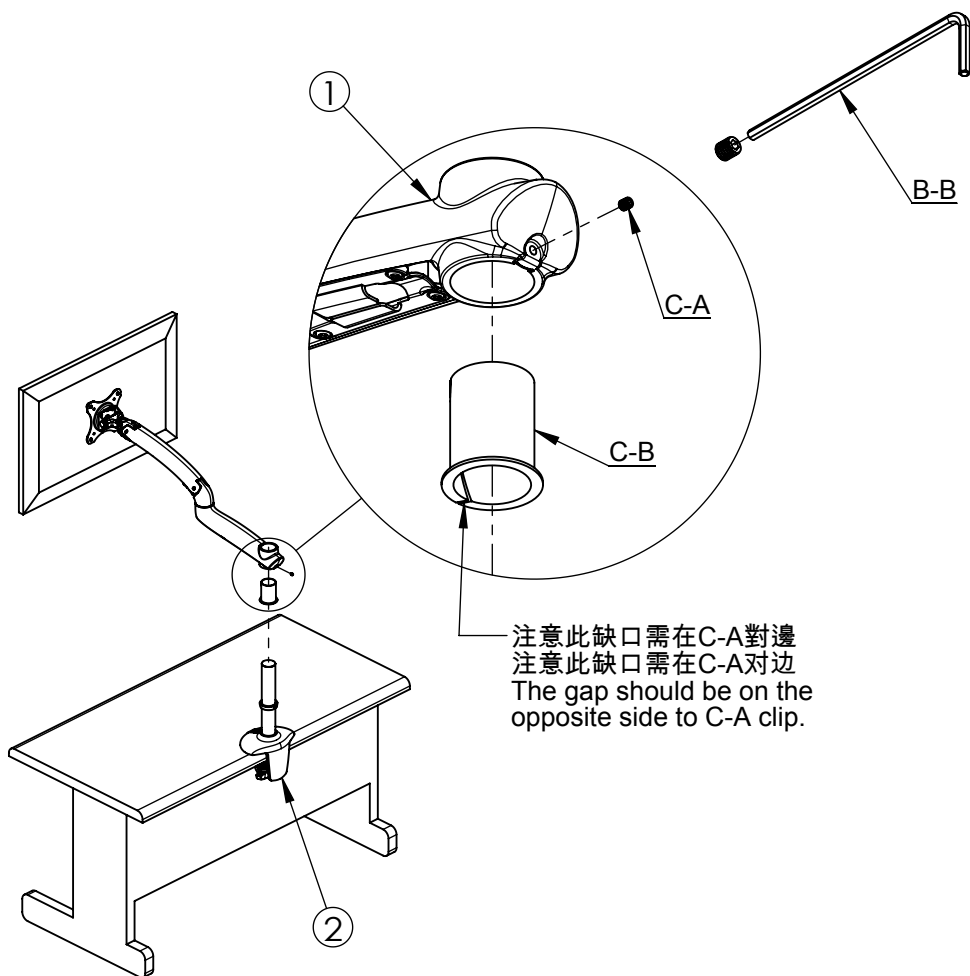
步驟四：再将C-B依图套入至①孔内到底。(注意图示缺口方向)

Step 4 : Install C-B sleeve into the hole of the arm set. (Note the sleeve gap location)

步驟五：最後將①整組套入至②管內後用C-A鎖緊即完成。

步驟五：最后将①整组套入至②管内后用C-A锁紧即完成。

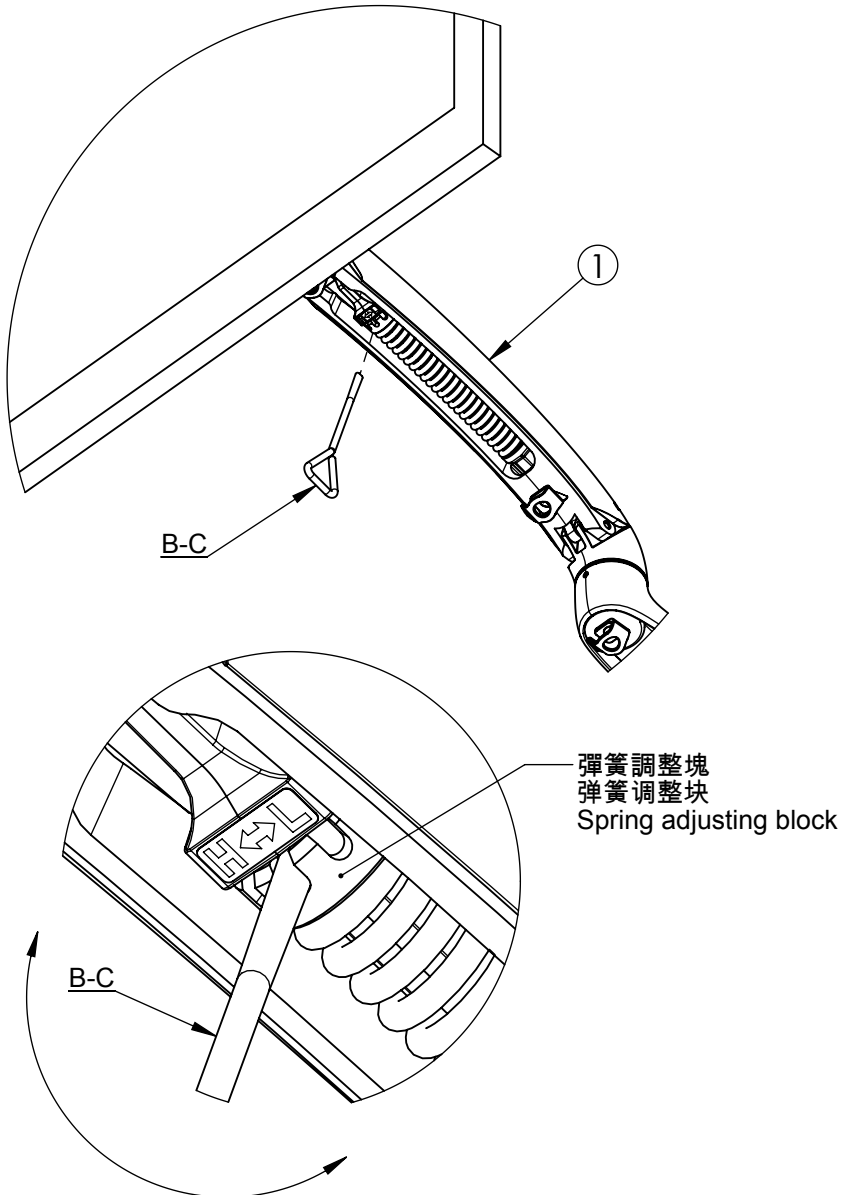
Step 5 : Inset the arm set into the desk clamp base, and tighten the arm set by C-A screw.



註：產品組裝完畢後請視螢幕重量使用B-C調整"彈簧調整塊"，重螢幕往"H"方向調整，輕螢幕往"L"方向調整。

注：产品组装完毕后请视屏幕重量使用B-C调整"弹簧调整块"，重屏幕往"H"方向调整，轻屏幕往"L"方向调整。

Remark : After the installation, please use B-C wrench to adjust the spring adjusting block based on the weight of the monitor.  
"H" is provided for the heavy monitor and "L" is provided for the light monitor.

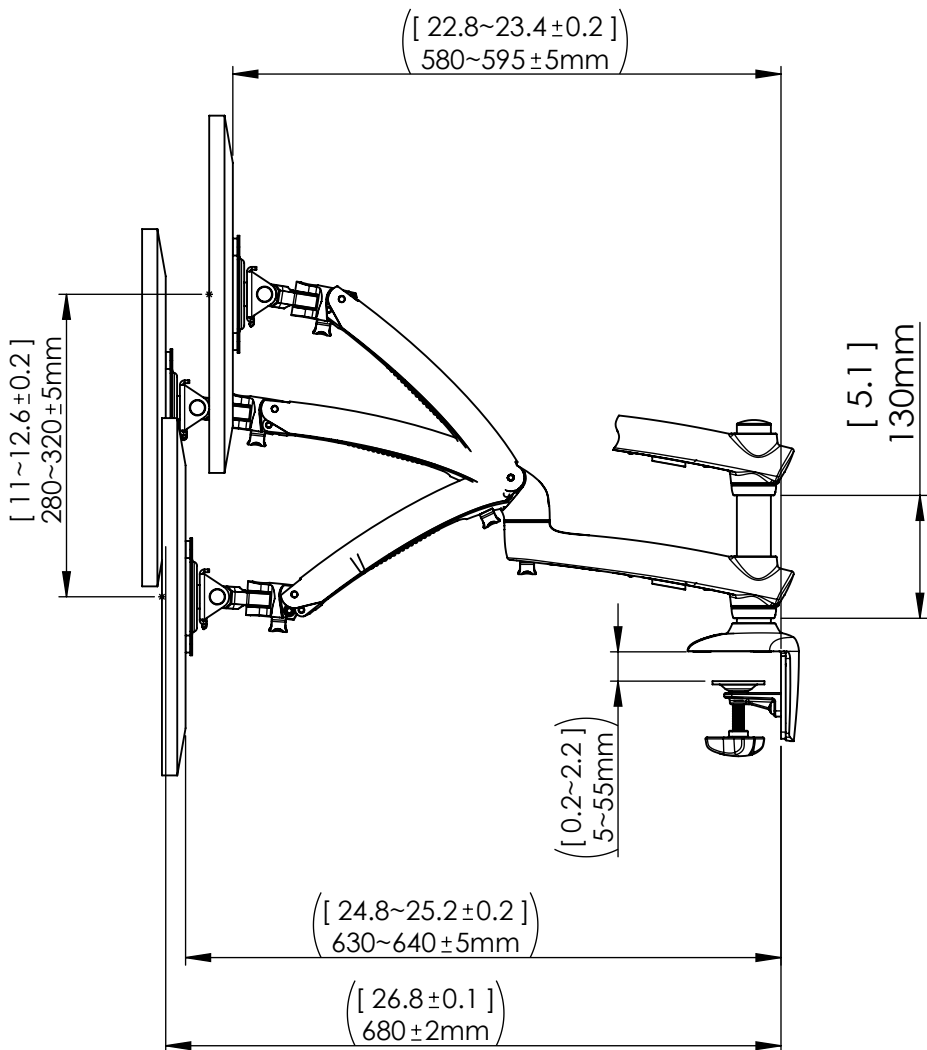


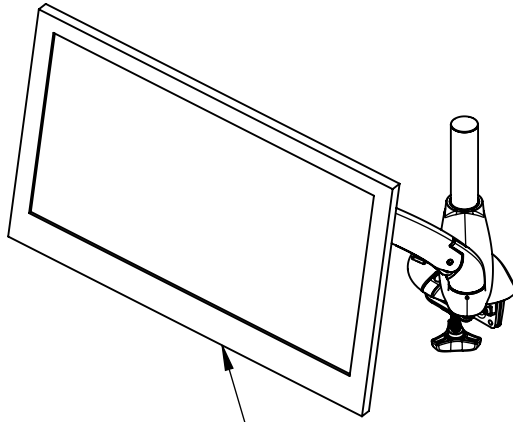
組立完成圖  
組立完成图  
Assembly completed



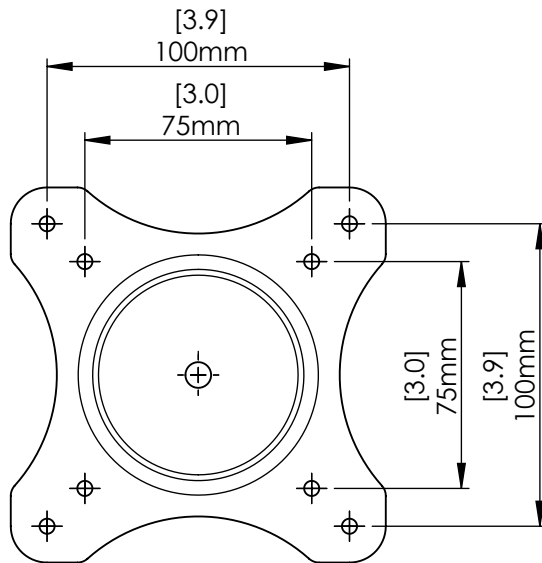


- ※ 手臂拉伸距離會因彈簧依螢幕調整而有些差異
- ※ 手臂拉伸距離會因彈簧依螢幕調整而有些差異
- ※ The distance of the arm stretch is depending on the spring tension adjusted for different weights of monitors.





螢幕 $\leq 27''$   
屏幕 $\leq 27''$   
Monitor $\leq 27''$   
3.8~8.1kg



VESA

※ 以下角度以一般平面螢幕為基準，實際角度還是要依安裝的螢幕而定。  
※ 以下角度以一般平面螢幕為基準，实际角度还是要依安装的屏幕而定。  
※ Below angles are estimated for general monitors.  
Actual angles would depend on the monitor in use.

