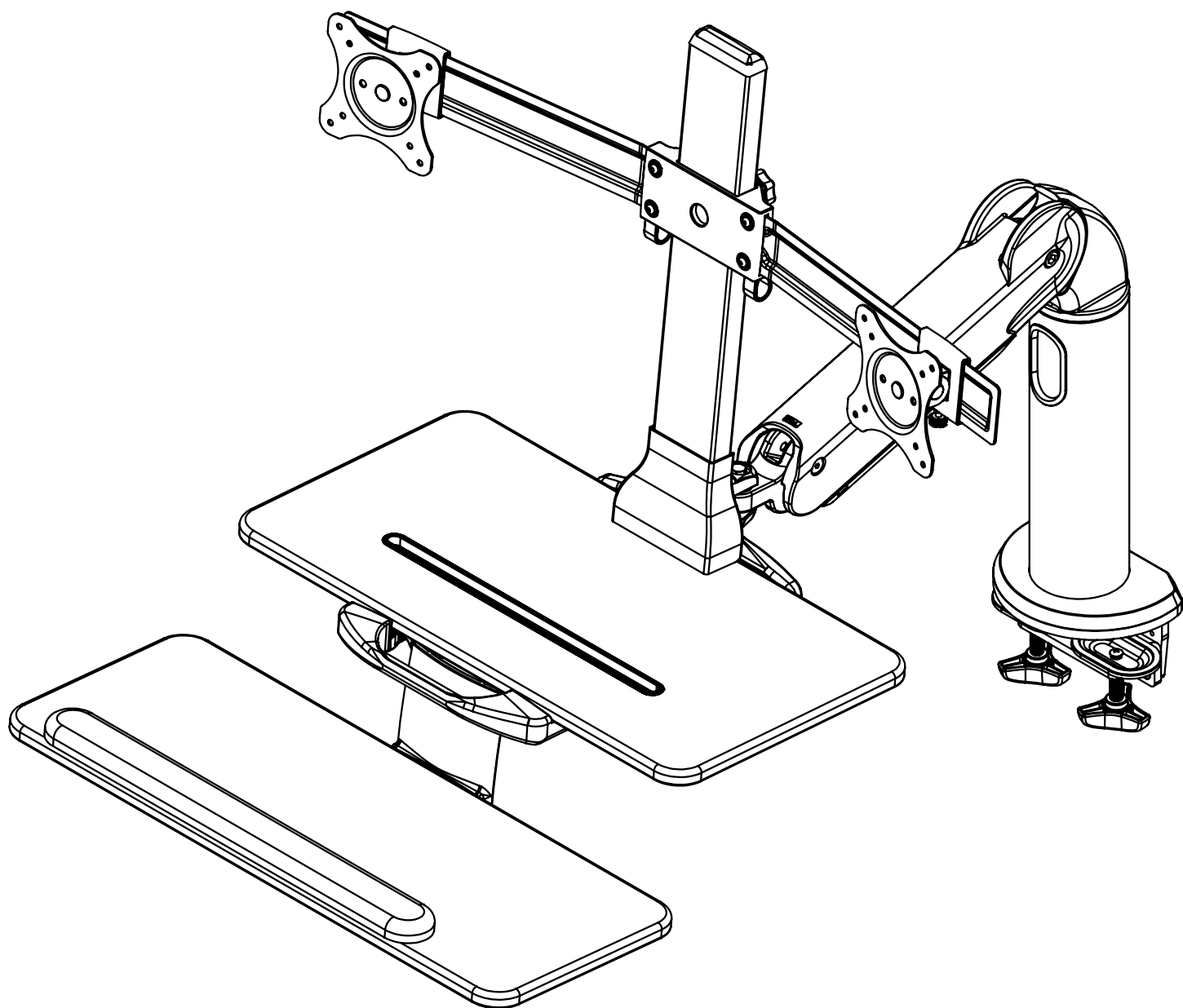


iErgoArm® 「泰坦」 螢幕支架-雙螢幕款

Classic / 2-tier Sit-Stand Workstation: Dual-Monitor Application



Made in Taiwan

組裝說明書

Installation Instruction

※注意事項※

※使用本產品前，請先確認與產品搭配的桌子是否足夠堅固。

我們建議桌子須達到以下要求。

- 1.厚度需18~90mm的實心桌面，如有玻璃夾層10mm以上均可。
- 2.不建議使用空心板材質。

※為避免操作上的任何不便，建議使用者延長連接線材的長度至總長3~5米左右，例如螢幕線、音源線、或USB線材等；因應適配情況及主機或電源插座各有不同，未達最佳使用狀況及坐立調整活動範圍，建議使用者視需求使用較長線材。

※Installation Notice※

※ Before beginning installation, please first make sure the table/desk applied is firm and robust.

Please refer to the guidance listed below for specifications of tables/desks that are strongly recommended to comply with:

	Tabletop/Worktop	Guidelines
1	Thickness	(wood/laminate) 18- 90 mm / 0.7"-3.54" in. (glass) 10 mm / 0.4" in
2	Caution	Do NOT apply with tables or desks made from plastic or/and cavity panels

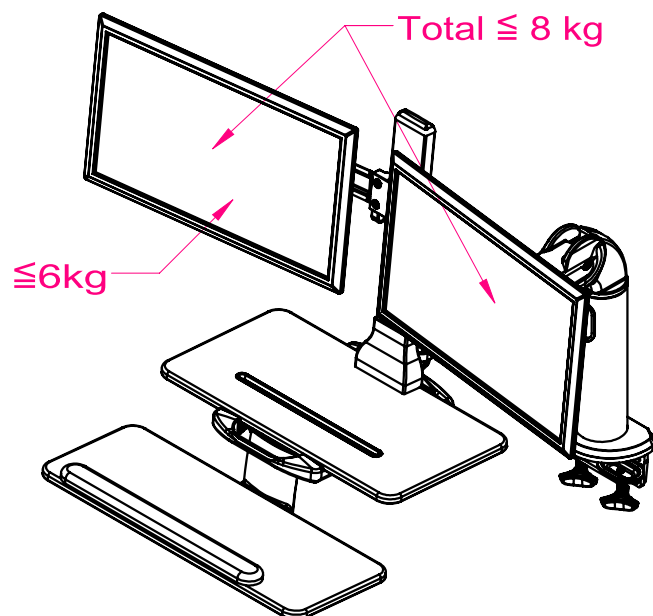
※ In order for users to perform all-round adjustment to its maximum at ease/**without hindrance**, users are strongly recommended to have all wiring extended to at least 3-5 m / 9.8'-16.4' ft to support effortless adjustability and functionality.

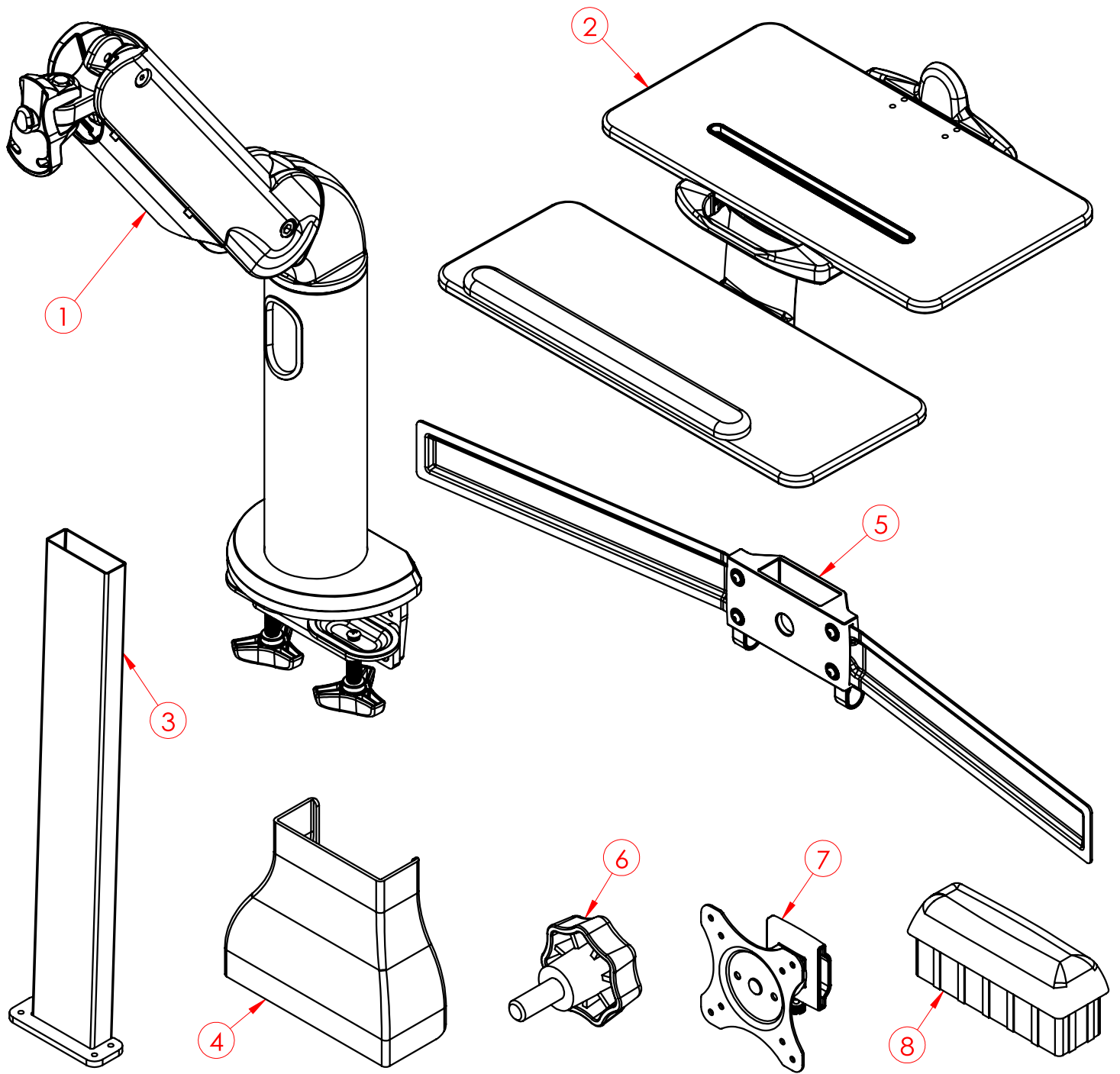
※荷重注意事項※

- ※螢幕單邊重量不應超過6kg，螢幕總重量不應超過8kg。
- ※桌面上所有物品總重量不應超過12kg。

※Loading Capacity Notice※

- ※Monitor Capacity up to 8 kgs.
For dual, one monitor not exceeds 6kgs.
- ※Total Payload Capacity up to 12 kgs





產品型號 Model	單件編號 Part No.	規格 Description	零件包數量 Qty
SP203-D	1	手臂組 Arm Set	1
	2	桌板組 2-tier Worksurfaces	1
	3	螢幕立柱 Monitor Column	1
	4	立柱飾蓋 Column Bottom Cover	1
	5	雙螢幕支架 Dual-Monitor Holder	1
	6	星型旋鈕 Star Knob	1
	7	雙螢幕滑塊組 Monitor Adapter	2
	8	立柱上蓋 Column Top Cover	1

零件包編號 Part No.	零件包數量 Part Qty.	單件編號 Sub-part No.	單件數量 Sub-part Qty.	規格 Description	圖示 Image
A-1	2	A-A	4	M4 x 15mm 螺絲 M4 x 15mm Phillips Screw	
		A-B	4	M4 x 30mm 螺絲 M4 x 30mm Phillips Screw	
A-2	2	A-C	4	M5 x 15mm 螺絲 M5 x 15mm Phillips Screw	
		A-D	4	M5 x 30mm 螺絲 M5 x 30mm Phillips Screw	
A-3	2	A-E	4	5mm 塑膠墊片 5mm Spacer	
		A-F	4	10mm 塑膠墊片 10mm Spacer	
B-1	1	B-A	1	調整套筒 Torque Wrench	
C-1	1	C-A	4	M6 x 50mm 內六角平頭螺絲 M6 x 50mm Hexagon Socket Low Head Screw	
D-1	1	D-A	2	M6 x 25mm 內六角平頭螺絲 M6 x 25mm Hexagon Socket Screw	
		D-B	2	華司 Washer	
		D-C	1	4號六角扳手 4mm Allen Wrench	

※需自備十字螺絲起子

※ADDITIONAL TOOLS REQUIRED

- Phillips screwdriver

步驟一：將①手臂組固定在辦公桌合適處。

※ 此產品本體淨重約為20公斤左右，建議勿搭配使用輕薄型塑膠製桌子，以免桌身無法承重而造成使用危險。

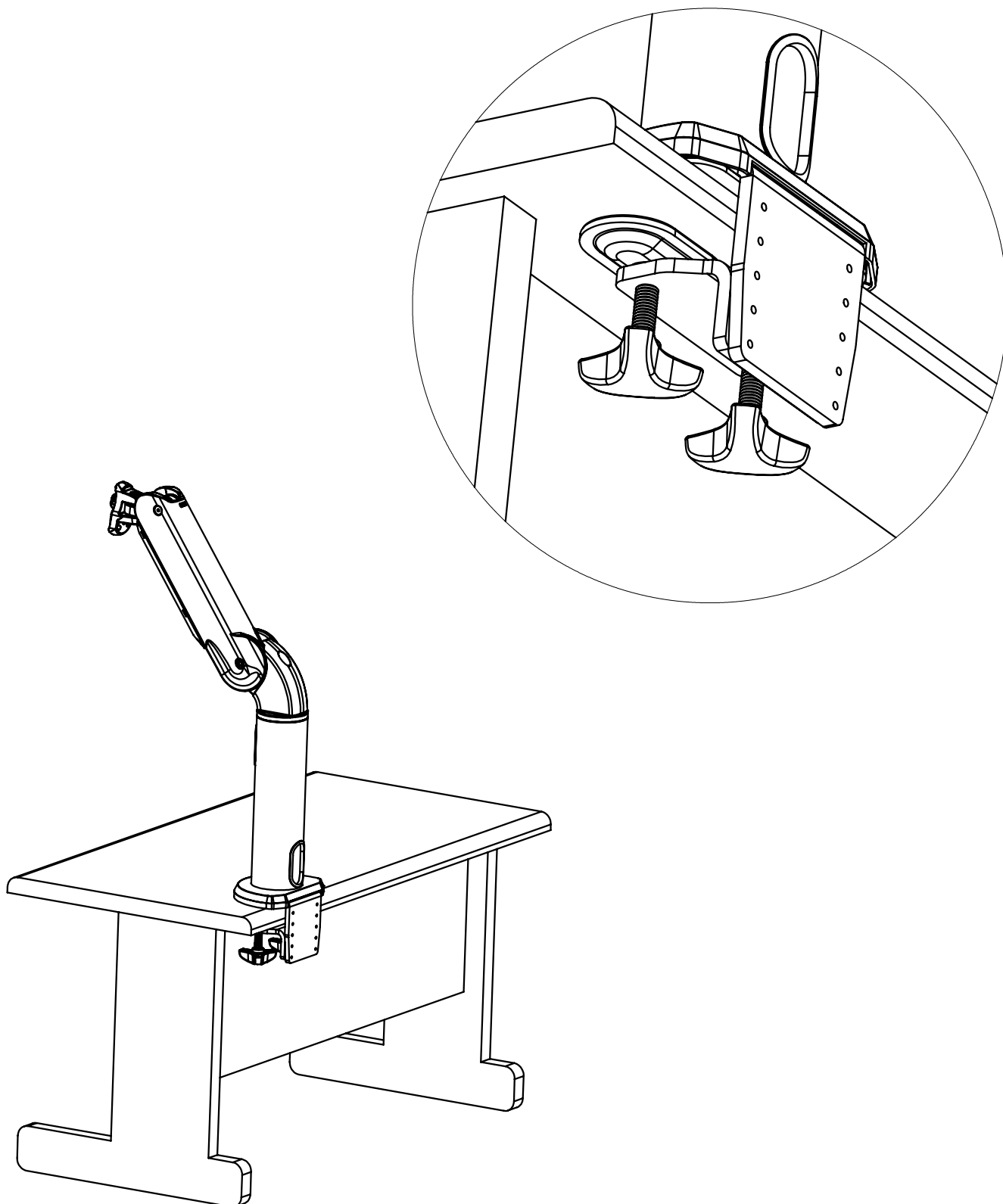
※ 適用桌板厚度: 18~90 mm。

Step 1 : Place ① <Arm Set> onto the tabletop where desired and then lock tight 2 knobs.

※ The product itself is about 20 kgs in weight.

To avoid dangerous settings, please do not apply with light or thin tables/desks which have low weight capacity.

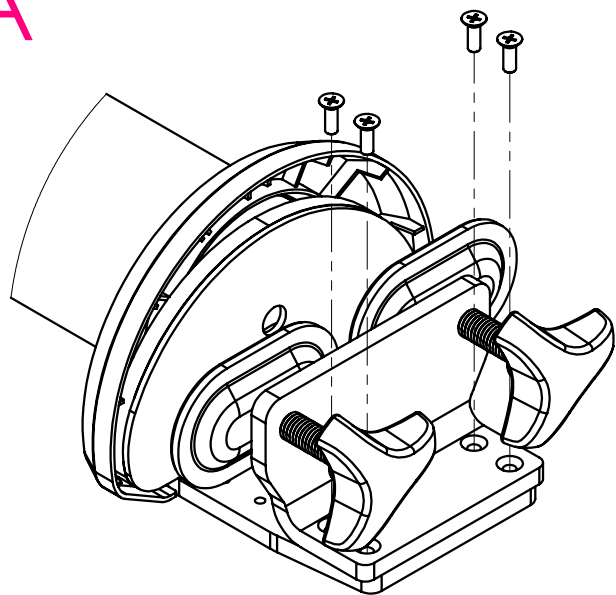
※ Suitable Tabletop/Worktop thickness : 18~90mm.



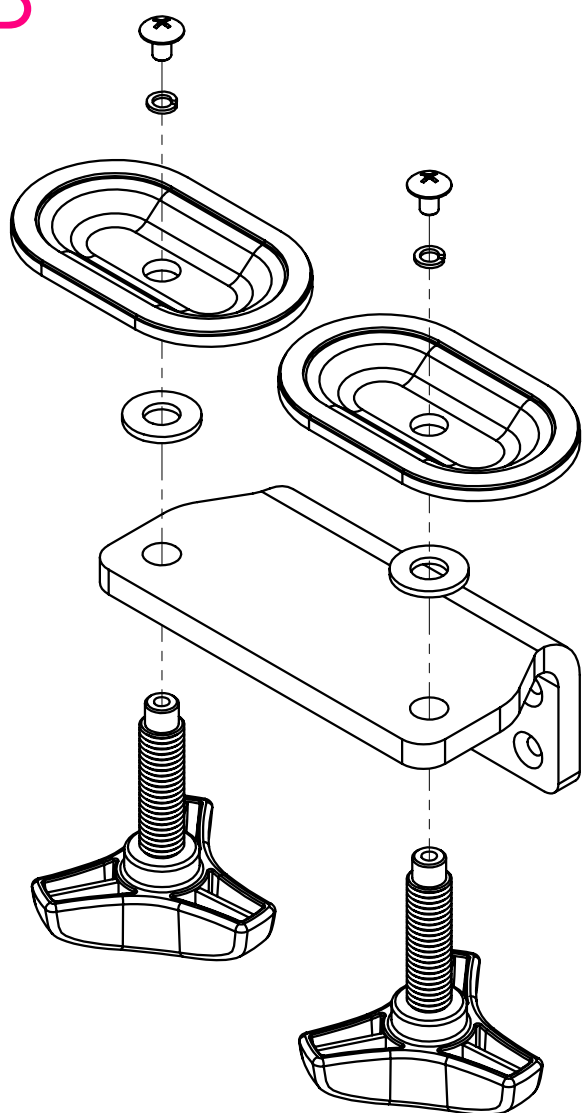
※若桌板較厚無法夾上，請先將夾座組如圖A自手臂組上卸下，
並依圖B、C的步驟將L型鐵翻面後重組，以增加夾座空間。

If the table is thick and cannot be clamped, please first remove the clamp base assembly from the arm set as shown in Figure A.
Follow the steps in Figures B and C to turn the L-shaped iron over and reassembly it to increase the space for the holder

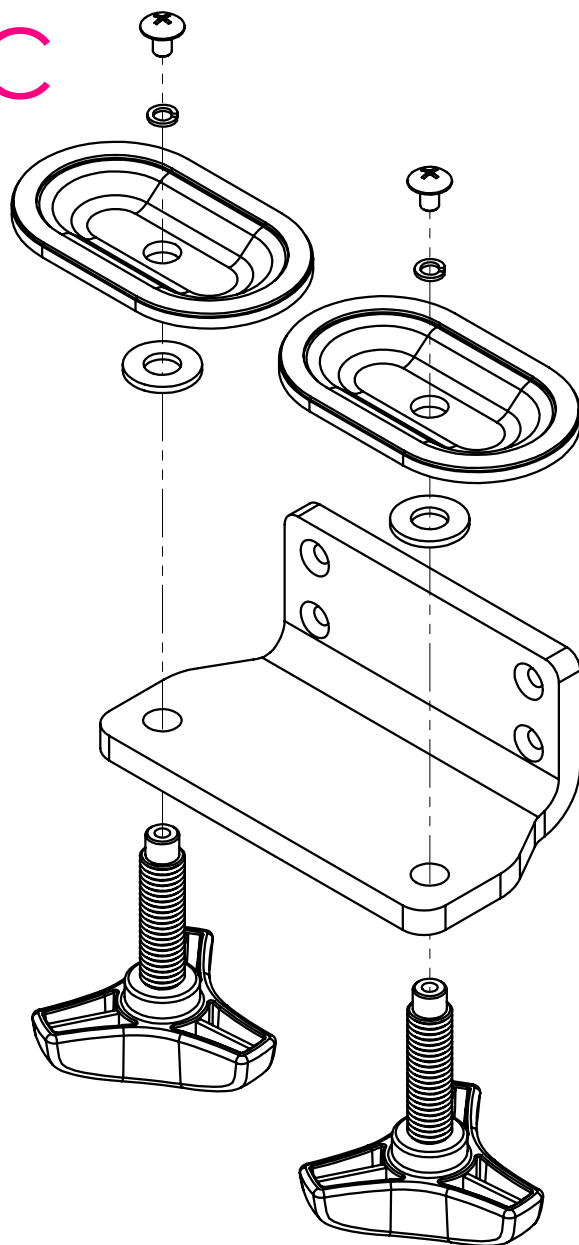
A



B

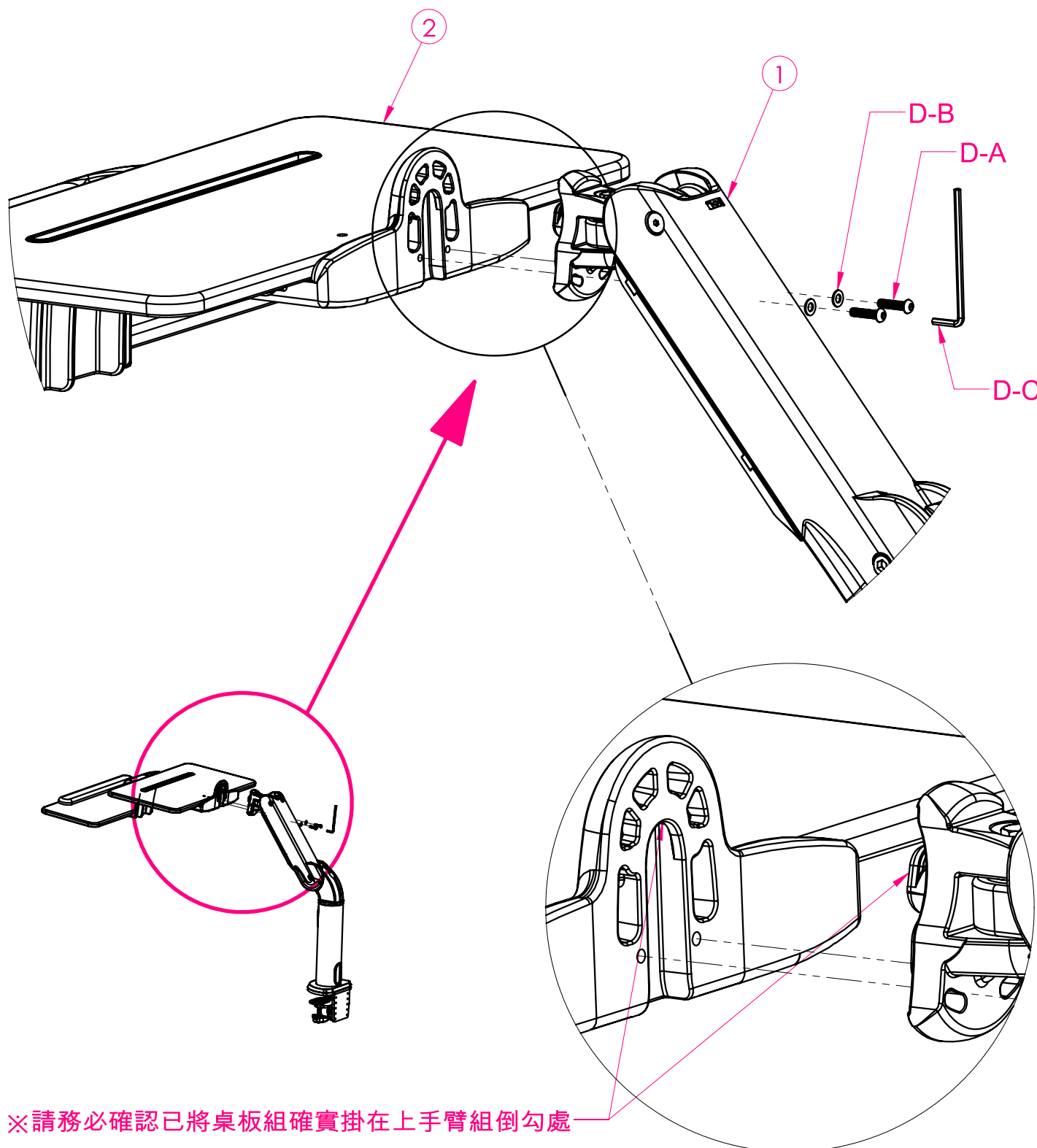


C



步驟二：先將②桌板組掛上①手臂組，
並依據視線把②桌板組調整至水平。
接著如圖依序將(D-A)螺絲穿過(D-B)華司與②桌板組，
再使用(D-C)扳手鎖緊固定。

Step 2 : Nest ② <Worksurface> onto ① <Arm Set> ,
and adjust ② <Worksurface> to a horizontal angle by sight .
Next, insert D-A screws through D-B washers into ② <Worksurface> ,
and use D-C tool (Allen Wrench) to fasten the integrated parts tightly.



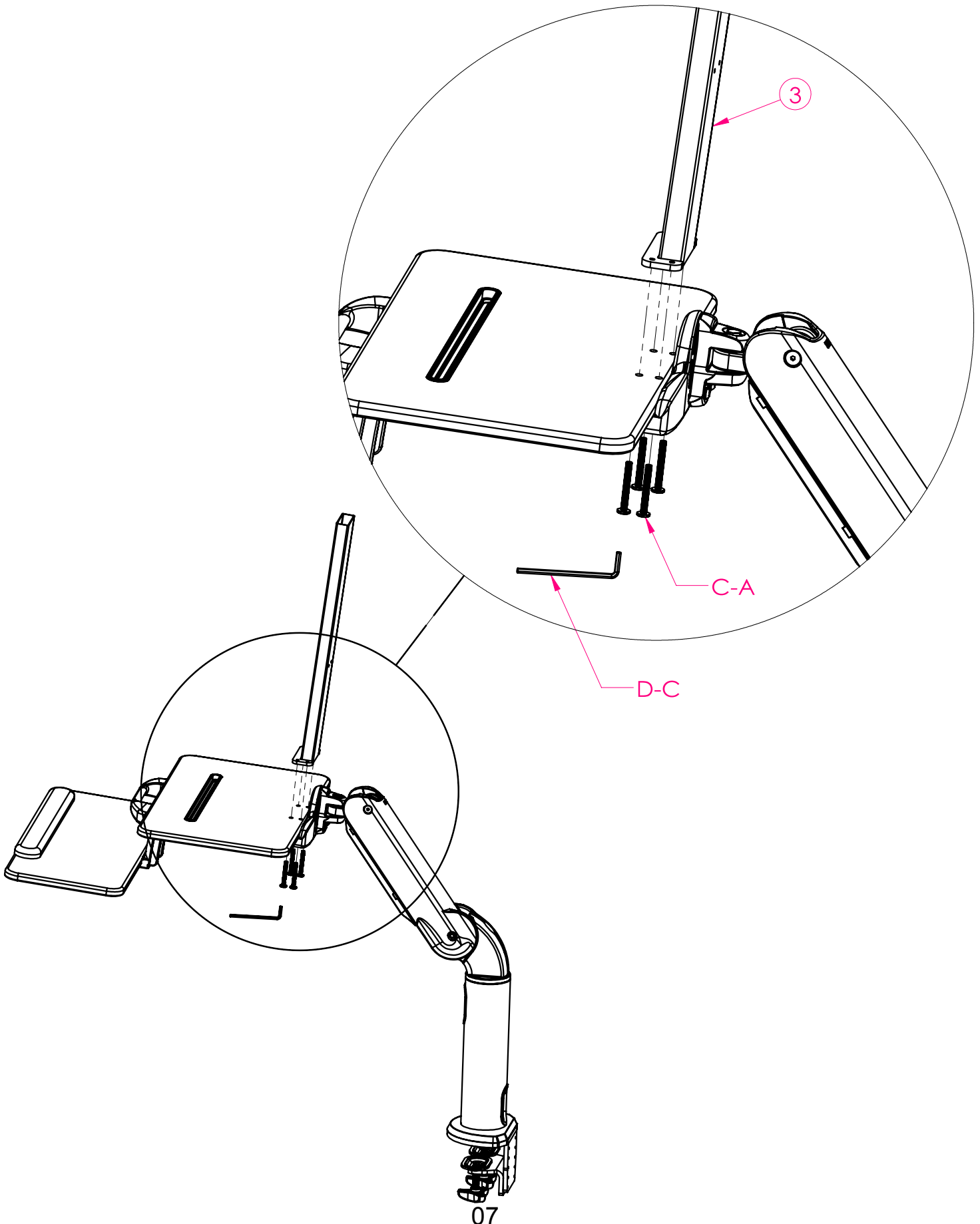
※請務必確認已將桌板組確實掛在上手臂組倒勾處

※Make sure that the Worksurface's rear groove is properly attached
to the tongue at the front of the Arm Set before fastening.

步驟三：依照4個孔洞結合③螢幕立柱與②桌板組，
接著用(C-A)螺絲穿過兩者後用(D-C)扳手固定。

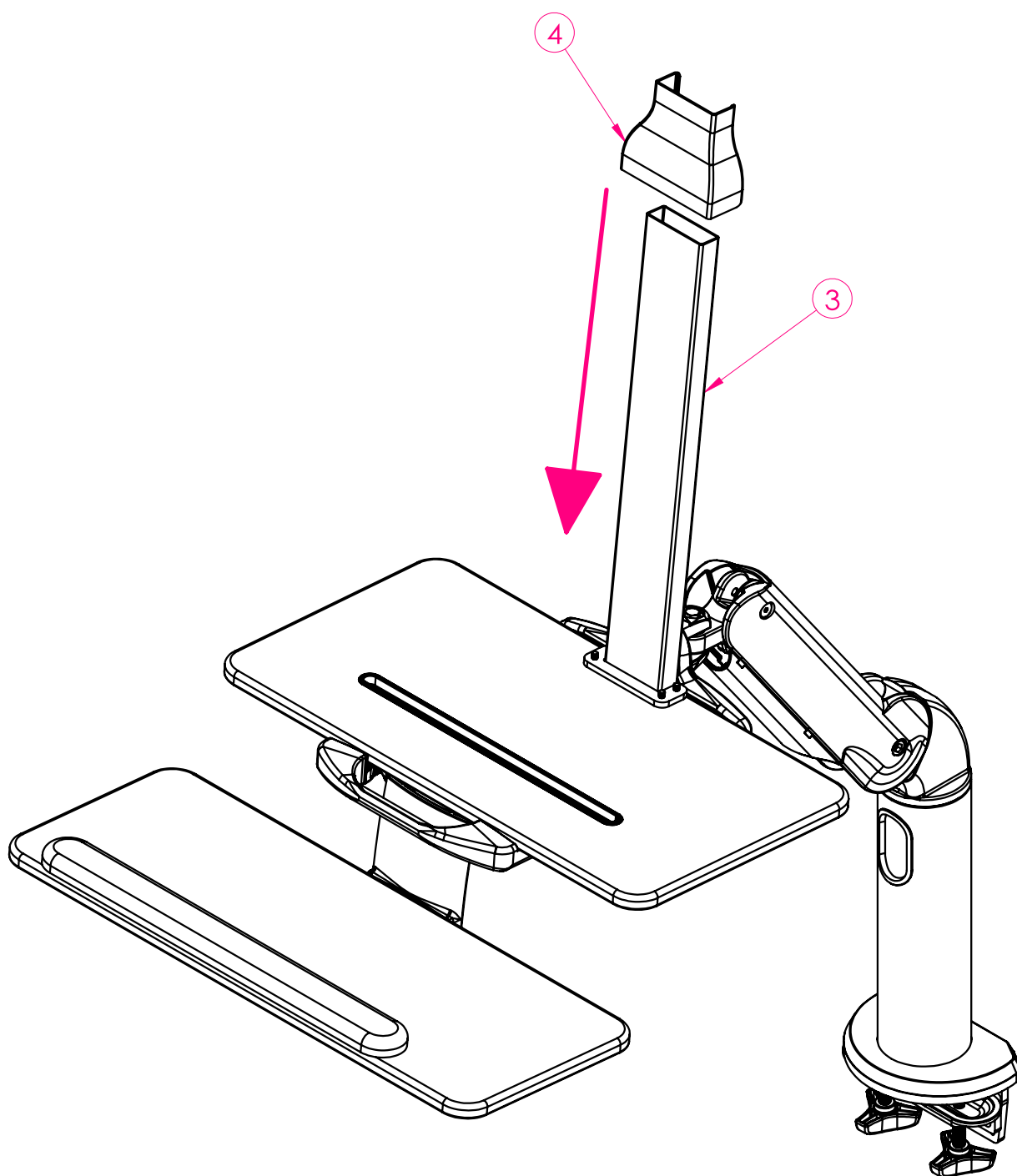
Step 3 : Install ③ < Monitor Column > with ② < Worksurface >
by inserting 4 pcs of C-A screws through,
combined parts into the 4 preset holes underneath.

After finishing above procedures, use D-C tool (Allen Wrench) to secure 4 screws.



步驟四：將④立柱飾蓋套入③螢幕立柱。

Step 4: Insert the ④ <Column Bottom Cover> into ③ <Monitor Column>, till it rests at the bottom.



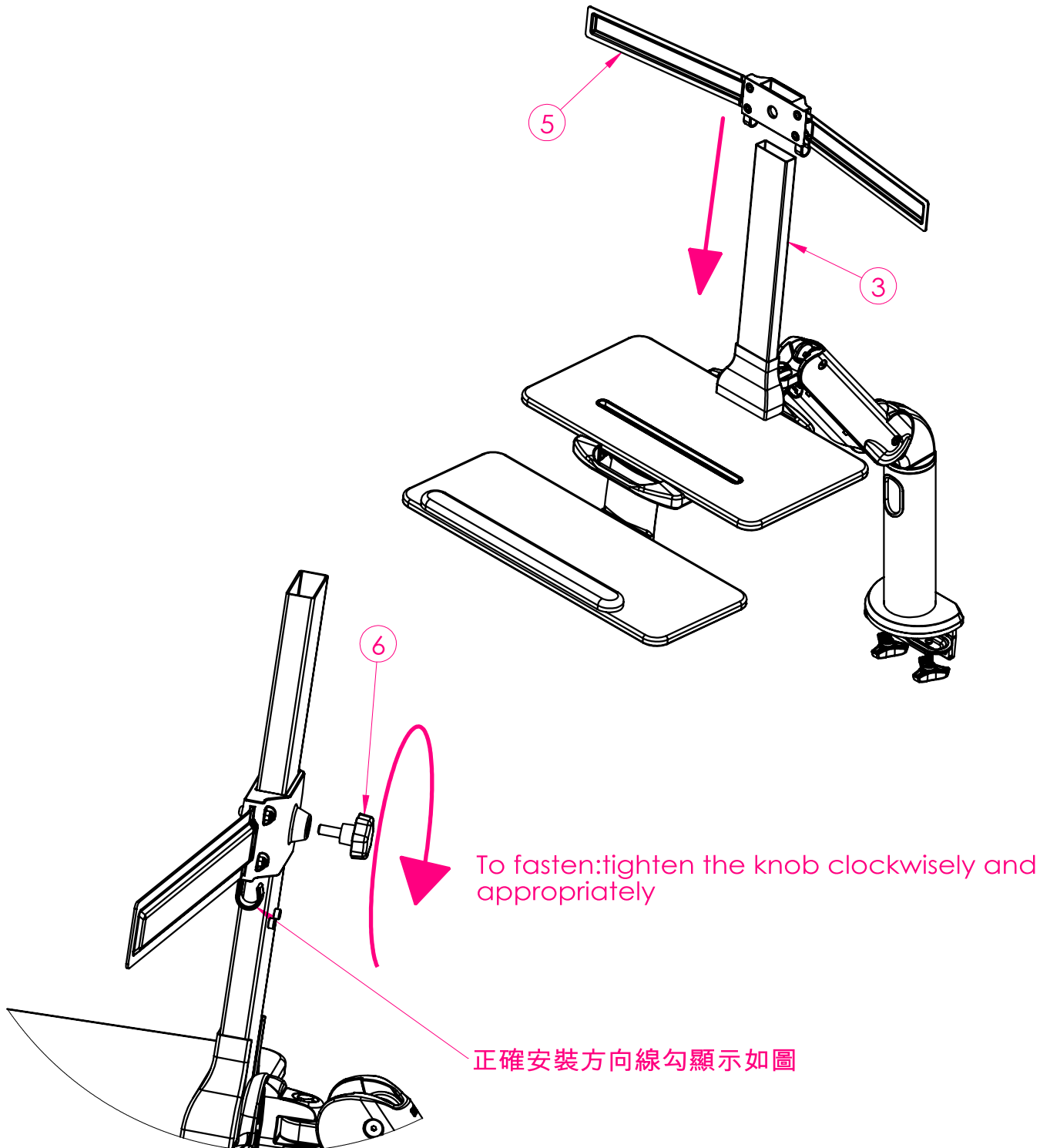
步驟五：將⑤雙螢幕支架套入③螢幕立柱，於適當的高度使用⑥星型旋鈕固定滑塊。

※將旋鈕旋轉至螢幕支架組不會滑落即可，切勿強硬將旋鈕鎖入，避免造成固定支架組破損。

Step 5 : Slide ⑤ <Dual Monitor Holder > into the ③ <Monitor Column>till it gets to the height desired and then tighten ⑥ <Star knob> at rear to secure.

※Make sure to tighten the knob appropriately until it's secured and stays at the desired position.

Do NOT try to overdo by force to prevent breaking or damaging the part irrevocably.

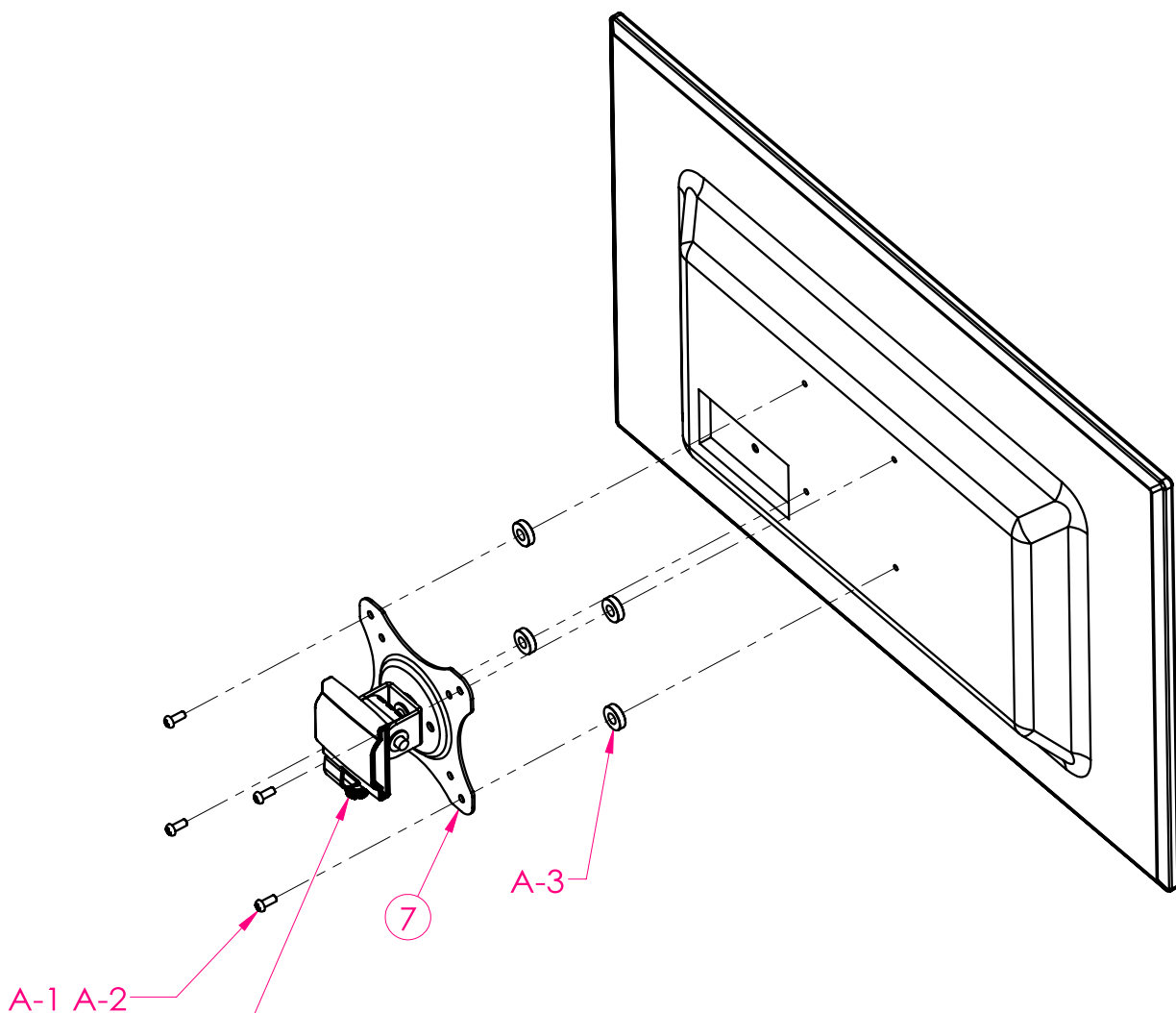


步驟六：依需求選擇(A-1)螺絲組或(A-2)螺絲組，
將其穿過⑦雙螢幕滑塊組與(A-3)墊片後鎖入螢幕。

※因應各家廠牌螢幕的VESA孔深度不一，
當使用(A-A)或(A-C)時，建議搭配(A-E)；
當使用(A-B)或(A-D)時，建議搭配(A-F)。

Step 6 : Depending on the monitor models, choose either A-1 screws or A-2 screws,
and have screws inserted through ⑦ <Monitor Adapter> and then A-3 spacers
to into the monitor. Fasten all screws to secure.

Tips : Vesa hole depth may vary due to different monitor makers,
(A-A) or (A-C) screws are best to applied with (A-E) Spacers
while (A-B) or (A-D) screws are best to applied with (A-F) Spacers.

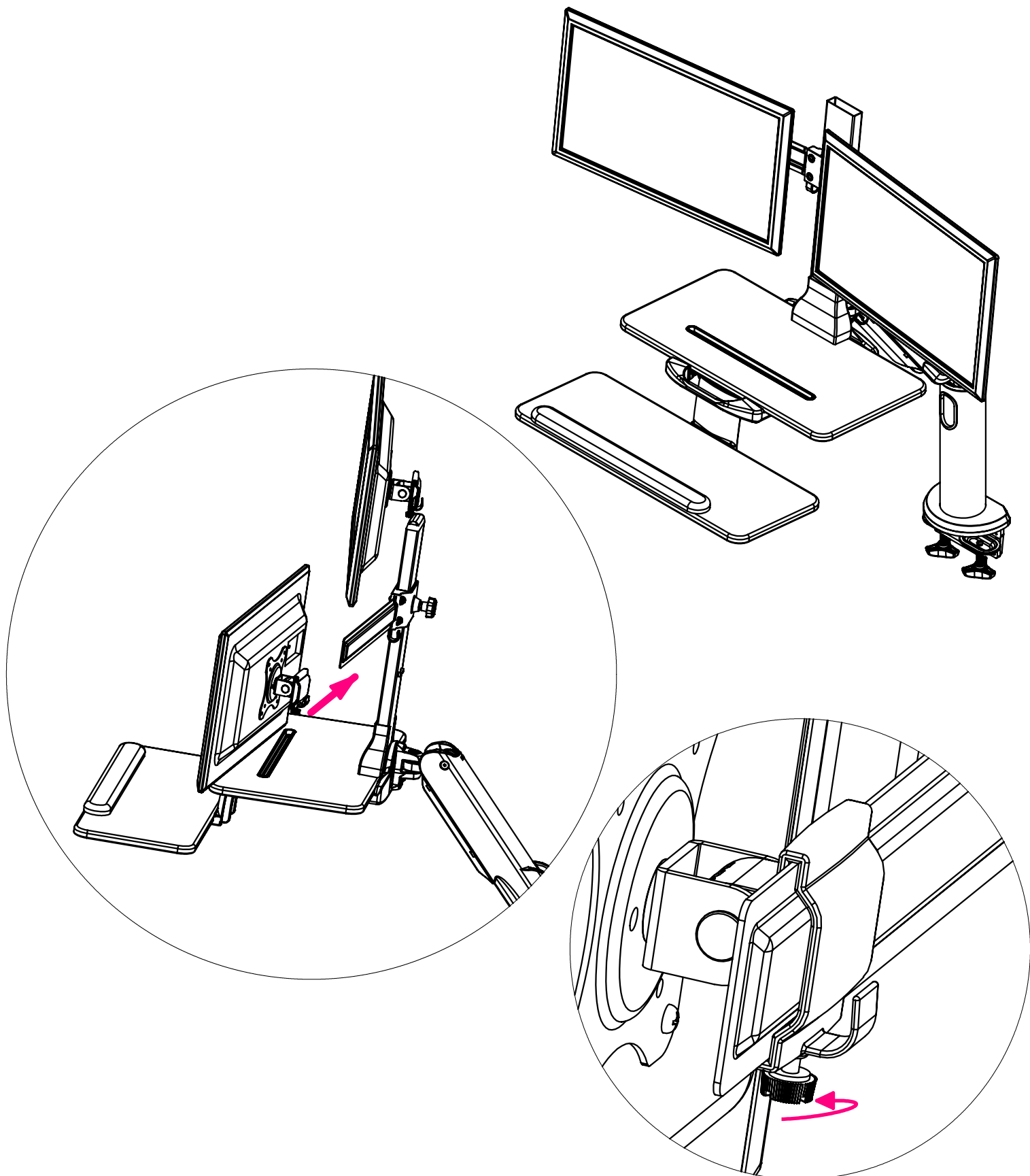


※ 安裝時請注意方向，捲線掛勾位在下方

※ Please ensure to install by the correct direction
where the wire management clip is located at the bottom
to store wiring if desired.

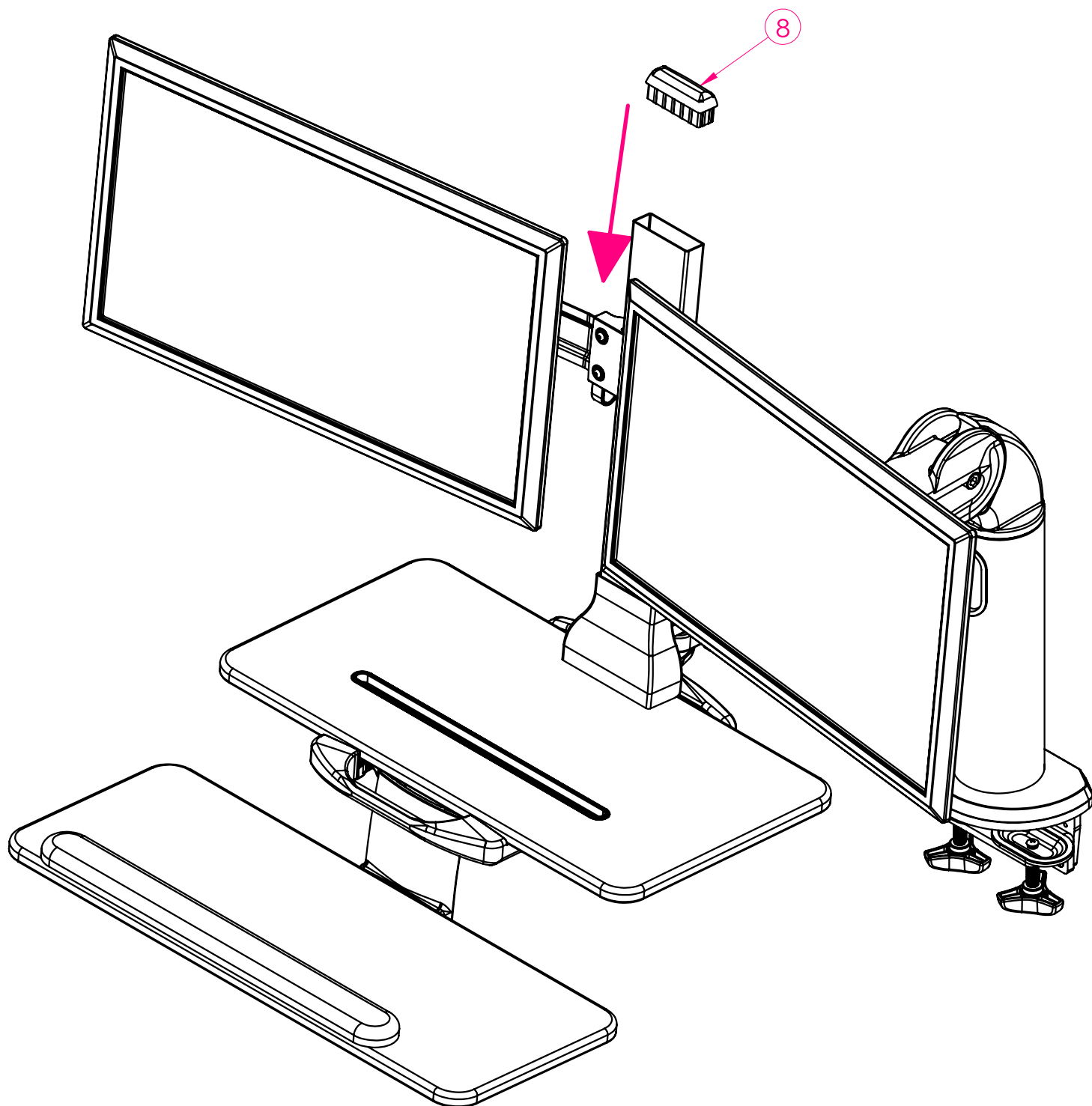
步驟七：將步驟六組裝的雙螢幕滑塊組滑進雙螢幕支架至合適位置後，
旋轉螢幕滑塊組下方的旋鈕將其固定。

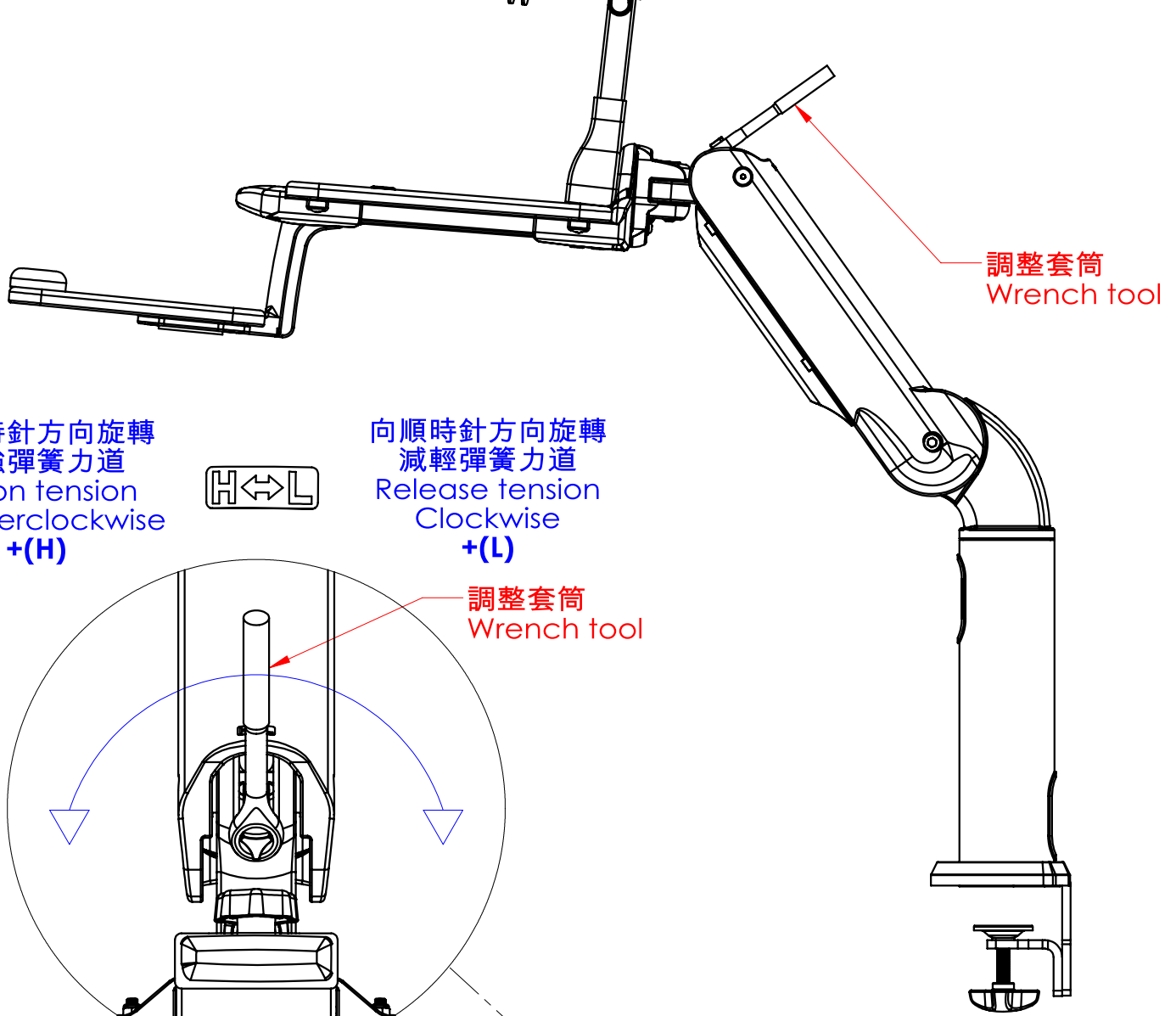
Step 7 : Slide <Monitor Adapter> assembled from Step 6
into <Dual Monitor Holder> and adjust locations to where desired,
Fasten the knobs beneath to secure.



步驟八：將⑧立柱上蓋放入螢幕立柱，完成組裝。

Step 8 : Last, clip on ⑧ <Column Top Cover> to finish properly.

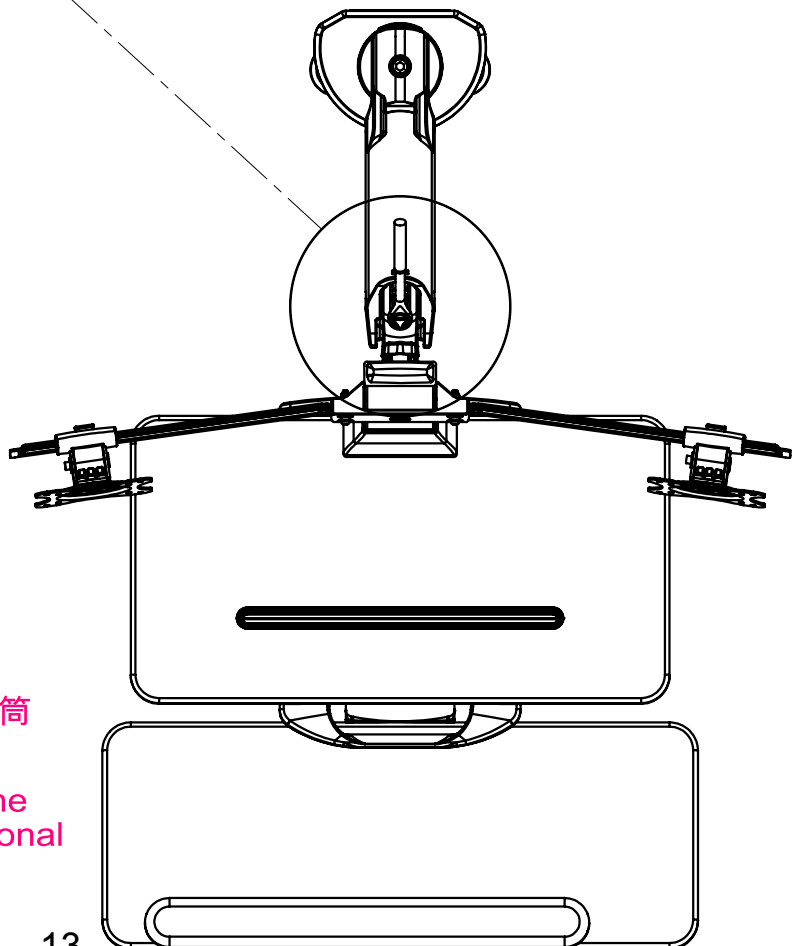
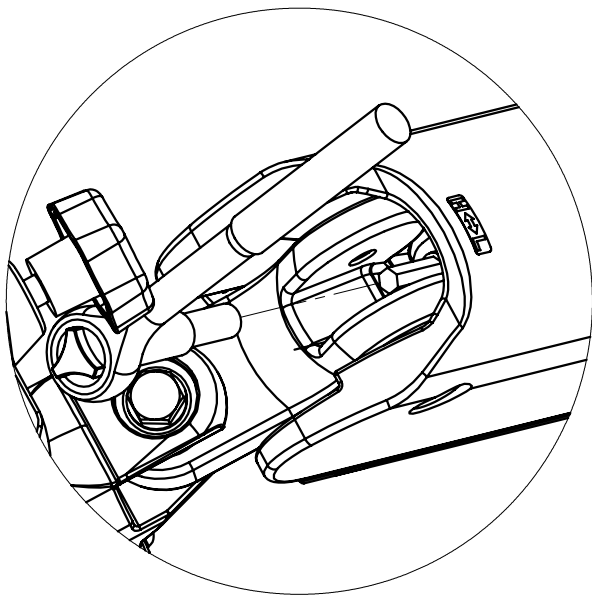
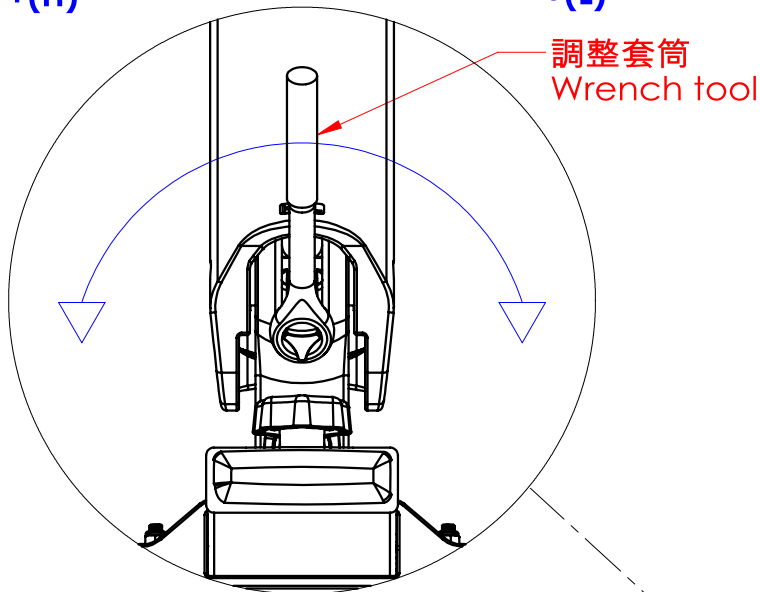




向逆時針方向旋轉
加強彈簧力道
Put on tension
Counterclockwise
+(H)



向順時針方向旋轉
減輕彈簧力道
Release tension
Clockwise
+(L)



請務必對準六角形調整桿，完整插入調整套筒後再進行調整。

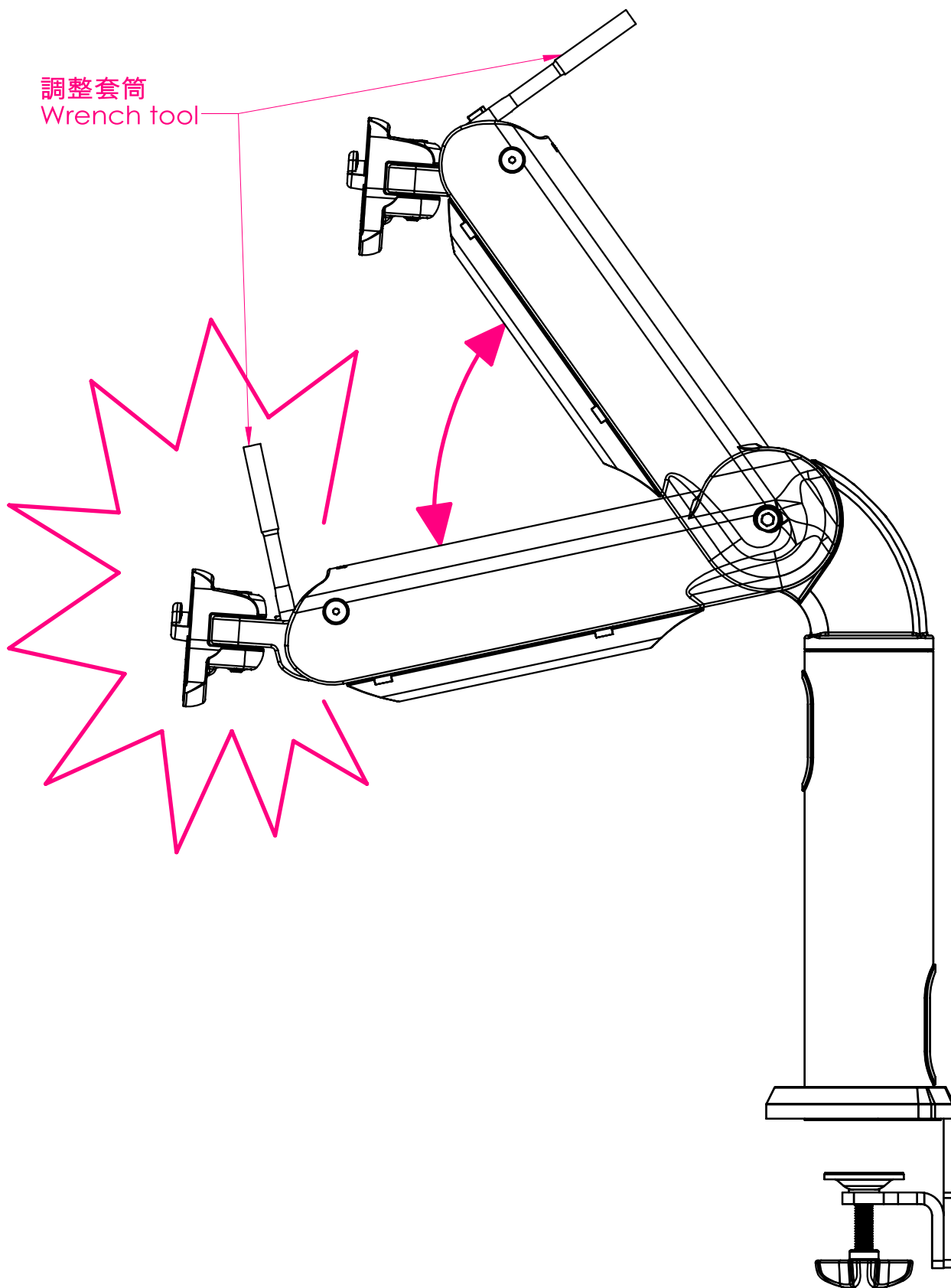
Before adjusting, please make sure that the wrench tool is fully aligned with the hexagonal adjusting rod.

※注意※

若在進行力道調整途中須要調整手臂高低時，請務必將調整套筒取下後再進行。
若未取下調整套筒就放低手臂，極有可能會造成手臂內部的調整桿損壞。

If need to adjust the height of the arm, be sure to remove the wrench tool before proceeding.

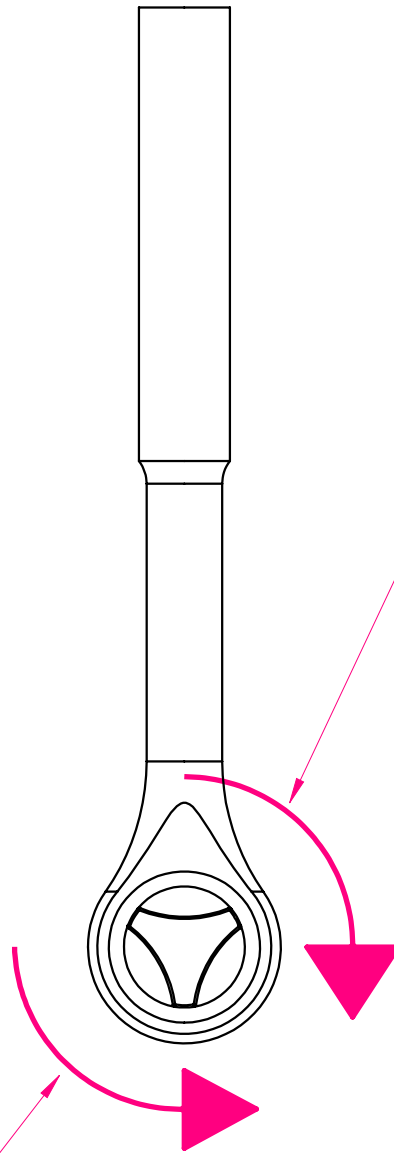
If you lower the arm without removing the wrench tool, it is very likely that the adjustment rod inside the arm will be damaged.



扳手使用說明：

當荷重較重時，需要增加簧力，
請先將調整套筒工具短頭前方的三角塊往順時針方向調整一次，
長端把手即可作反方向(逆時針)調整使用。

When applied with heavy loading and put on tension is required,
first switch the wrench head clockwise once so as to allow
counter-clockwise adjustment on the handle.



當荷重變輕時，需要減少簧力，
請先將調整套筒工具短頭前方的三角塊往逆時針方向調整一次，
長端把手即可作反方向(順時針)調整使用。

When applied with light loading and reduce tension is required,
first switch the wrench head counterclockwise once so as to allow
clockwise adjustment on the handle.

線材收納說明：將手臂下蓋如圖示的A方向推動，即可將其取下。

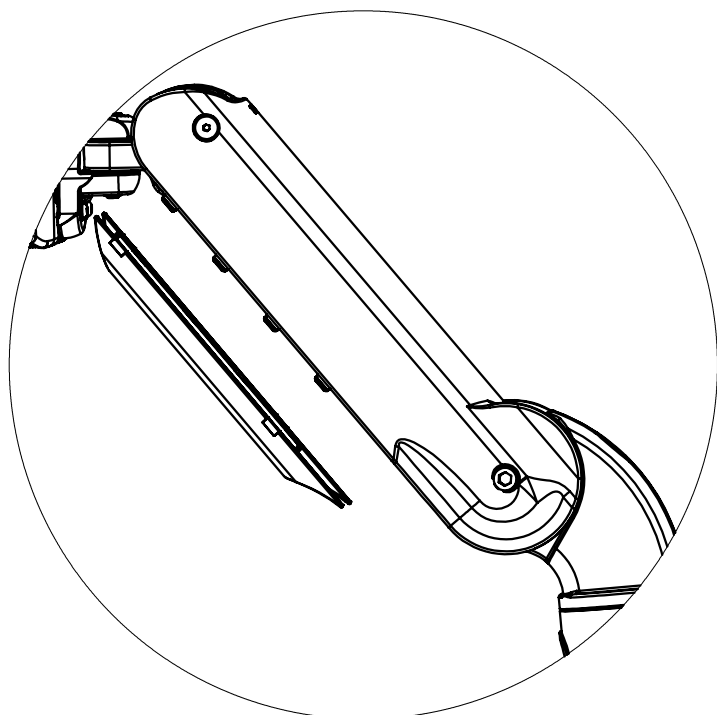
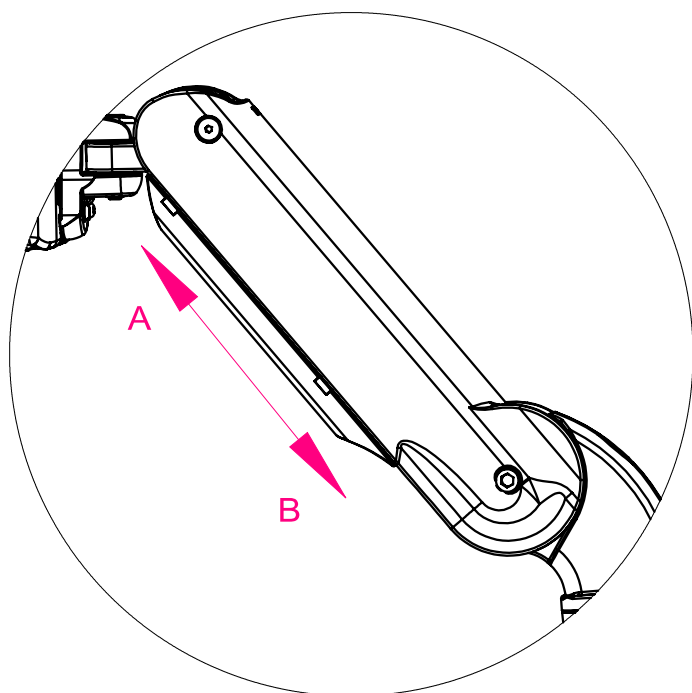
線材整理完成並收納於手臂內側後，
將手臂下蓋闔上並朝B方向推動，即可固定。

注意：蓋上手臂下蓋前，請注意手臂下蓋內側的刻字，
UP字樣需朝向A方向，DOWN字樣需朝向B方向

Wiring Management: Push towards Direction A to remove the bottom cover,
store the wire inside and click the cover back on
and slightly slide towards Direction B to secure.

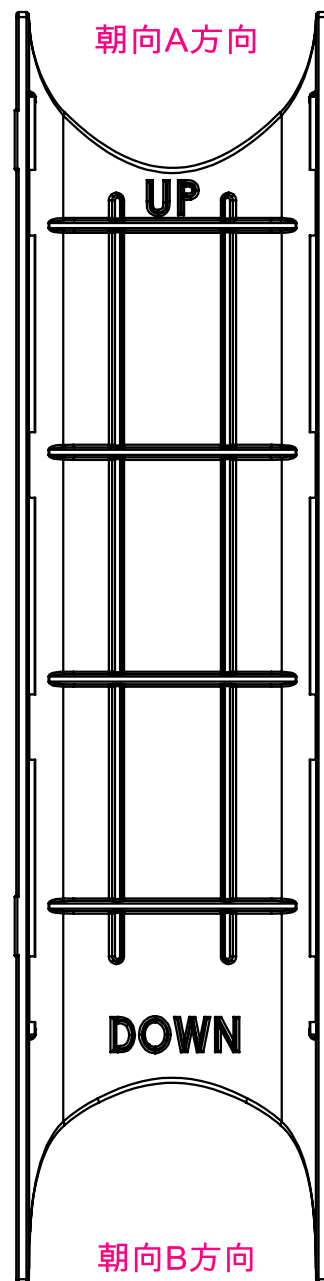
Check the inner engraving "UP" and "DOWN" for correct installation.

"UP" side is attached towards Direction A while "DOWN" side is
to be installed towards Direction B.



Towards Direction A

朝向A方向



朝向B方向

Towards Direction B

此頁空白

This page intentionally left blank.

此頁空白

This page intentionally left blank.

程鼎實業股份有限公司
台灣台中市大雅區神林路一段526號
Tel:886-4-25679181 Fax:886-4-25669582
統一編號：80112978
Website: www.cdgreat-officefurniture.com

C.D. Great Furniture Co., Ltd.
No.526, Sec. 1, Shenlin Rd., Daya Dist., Taichung City 428, Taiwan.
Tel:886-4-25679181 Fax:886-4-25669582
Website : www.cdgreat-officefurniture.com

產品保固章
(依蓋章日期為保固依據)